



DEPARTMENT OF THE ARMY
SAVANNAH DISTRICT, CORPS OF ENGINEERS
1590 ADAMSON PARKWAY, SUITE 200
MORROW, GEORGIA 30260-1777

REPLY TO
ATTENTION OF

FEB 17 2015

Regulatory Division
SAS-2014-00717

JOINT PUBLIC NOTICE
Savannah District/State of Georgia

The Savannah District has received an application for a Department of the Army Permit, pursuant to Section 404 of the Clean Water Act (33 U.S.C. 1344), as follows:

Application Number: SAS-2014-00717

Applicant: Ms. Cynthia Dunn
Shaw Industries, Inc.
2305 Lakeland Road
Dalton, Georgia 30720

Agent: Dr. Misty Huddleston
Geosyntec Consultants
1255 Roberts Boulevard, Suite 200
Kennesaw, Georgia 30144

Location of Proposed Work: The project site is located at 7300 GA 140, in Adairsville, Bartow County, Georgia (latitude 34.3803, longitude -84.9404).

Description of Work Subject to the Jurisdiction of the U.S. Army Corps of Engineers:
The permittee proposes to impact 0.03 acres of wetland (0.01 acres of permanent impacts and 0.02 acres of temporary impacts) and impacts to 1,030 linear feet of intermittent stream to construct an industrial facility. The permittee proposes to construct a 671,000 square foot carpet manufacturing facility, a stormwater management facility, office areas, parking areas, storage units, a 682,000 square foot railroad spur, additional parking and a master stormwater detention facility. The permittee will mitigate for the proposed impacts by purchasing 4,275 stream mitigation credits and 0.18 wetland mitigation credits. Due to the current unavailability of wetland credits in the primary service area, the permittee proposes to purchase wetland credits via the in lieu fee program.

BACKGROUND

This Joint Public Notice announces a request for authorizations from both the U.S. Army Corps of Engineers and the State of Georgia. The applicant's proposed work may also require local governmental approval.

STATE OF GEORGIA

Water Quality Certification: The Georgia Department of Natural Resources, Environmental Protection Division, intends to certify this project at the end of 30 days in accordance with the provisions of Section 401 of the Clean Water Act, which is required for a Federal Permit to conduct activity in, on, or adjacent to the waters of the State of Georgia. Copies of the application and supporting documents relative to a specific application will be available for review and copying at the office of the Georgia Department of Natural Resources, Environmental Protection Division, Water Protection Branch, 7 MLK, Jr. Drive, Suite 450, Atlanta, Georgia 30334, during regular office hours. A copier machine is available for public use at a charge of 25 cents per page. Any person who desires to comment, object, or request a public hearing relative to State Water Quality Certification must do so within 30 days of the State's receipt of application in writing and state the reasons or basis of objections or request for a hearing. The application can be reviewed in the Savannah District, US Army Corps of Engineers, Regulatory Division, 1590 Adamson Parkway, Suite 200, Morrow, Georgia 30260-1777.

State-owned Property and Resources: The applicant may also require assent from the State of Georgia, which may be in the form of a license, easement, lease, permit or other appropriate instrument.

US ARMY CORPS OF ENGINEERS

The Savannah District must consider the purpose and the impacts of the applicant's proposed work, prior to a decision on issuance of a Department of the Army Permit.

Cultural Resources Assessment: Review of the latest published version of the National Register of Historic Places indicates that no registered properties or properties listed as eligible for inclusion are located at the site or in the area affected by the proposed work. Presently unknown archaeological, scientific, prehistorical or historical data may be located at the site and could be affected by the proposed work.

Endangered Species: Pursuant to Section 7(c) of the Endangered Species Act of 1973, as amended (16 U.S.C. 1531 et seq.), we request information from the U.S. Department of the Interior, Fish and Wildlife Service, the U.S. Department of Commerce, the National Oceanic and Atmospheric Administration, and the National Marine Fisheries Service; or, any other interested party, on whether any species listed or proposed for listing may be present in the area.

Public Interest Review: The decision whether to issue a permit will be based on an evaluation of the probable impact including cumulative impacts of the proposed activity on the public interest. That decision will reflect the national concern for both protection and utilization of important resources. The benefit, which reasonably may be expected to accrue from the proposal, must be balanced against its reasonably foreseeable detriments. All factors, which may be relevant to the proposal will be considered including the cumulative effects thereof; among those are conservation, economics, aesthetics, general environmental concerns, wetlands, historic properties, fish and wildlife values, flood hazards, flood plain values, land use, navigation, shoreline erosion and accretion, recreation, water supply and conservation, water quality, energy needs, safety, food and fiber production, mineral needs, considerations of property ownership and in general, the needs and welfare of the people.

Consideration of Public Comments: The U.S. Army Corps of Engineers is soliciting comments from the public; federal, state, and local agencies and officials; Native American Tribes; and other interested parties in order to consider and evaluate the impacts of this proposed activity. Any comments received will be considered by the U.S. Army Corps of Engineers to determine whether to issue, modify, condition or deny a permit for this proposal. To make this decision, comments are used to assess impacts on endangered species, historic properties, water quality, general environmental effects, and the other public interest factors listed above. Comments are used in the preparation of an Environmental Assessment and/or an Environmental Impact Statement pursuant to the National Environmental Policy Act. Comments are also used to determine the need for a public hearing and to determine the overall public interest of the proposed activity.

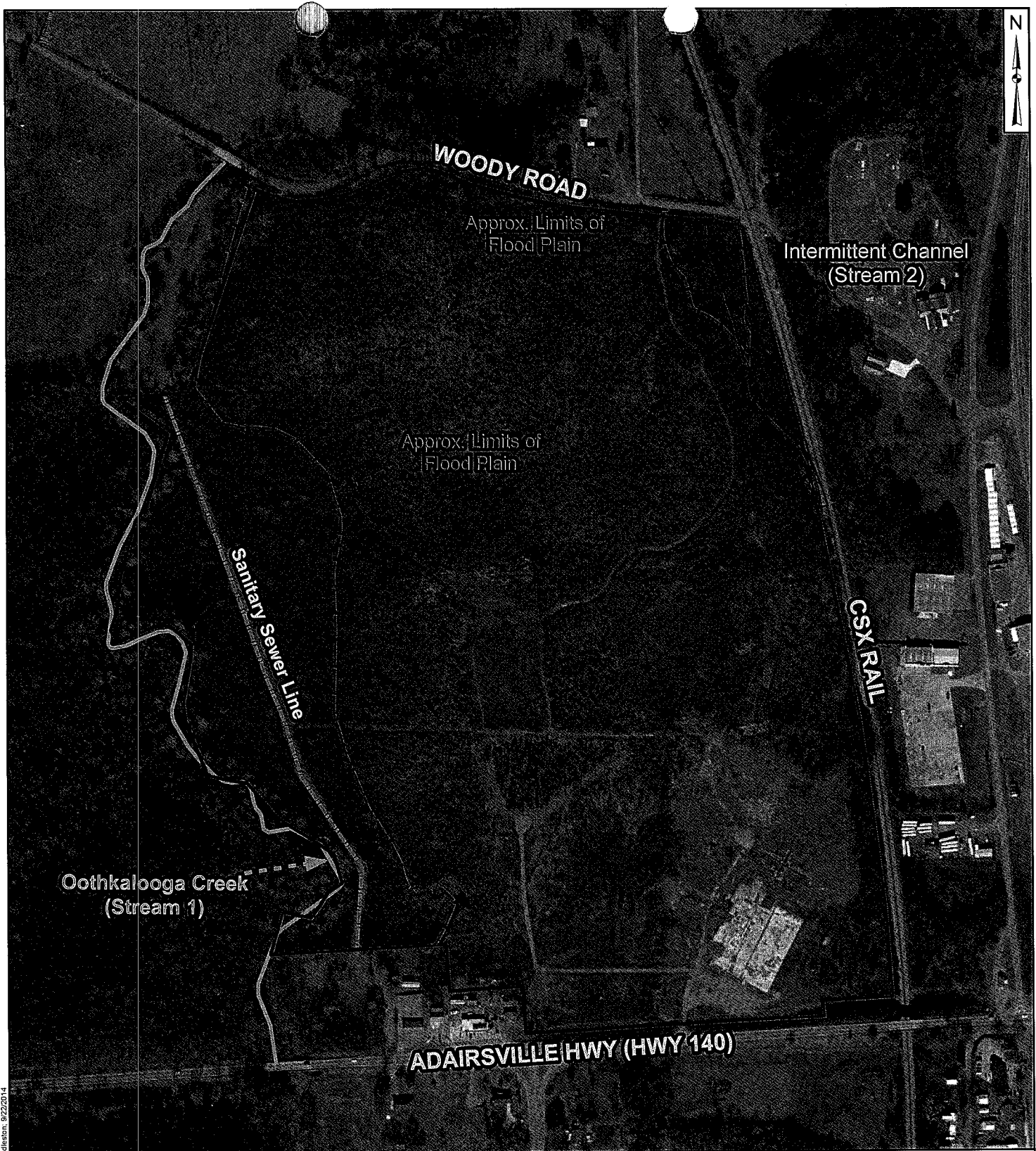
Public Hearing: Any person may request, in writing, within the comment period specified in this notice, that a public hearing be held to consider this application for a Department of the Army Permit. Requests for public hearings shall state, with particularity, the reasons for requesting a public hearing. The decision whether to hold a public hearing is at the discretion of the District Engineer, or his designated appointee, based on the need for additional substantial information necessary in evaluating the proposed project.

Comment Period: Anyone wishing to comment on this application for a Department of the Army Permit should submit comments in writing to the Commander, U.S. Army Corps of Engineers, Savannah District, Attention: Ms. Chikita' M. Sanders, 1590 Adamson Parkway, Suite 200, Morrow, Georgia 30260-1777, no later than 30 days from the date of this notice (March 23, 2015). Please refer to the applicant's name and the application number in your comments.

If you have any further questions concerning this matter, please contact Ms. Chikita' M. Sanders, Regulatory Specialist, Piedmont Branch at 678-422-6570.

****Encls**

1. Figure 1: Site Location Map
2. Figure 2: Aerial Map
3. Figure 6: USGS Topographic Map, Preferred Site Alternative
4. Figure 7: Jurisdictional Areas, Shaw Plant T1
5. Figure 8A: Jurisdictional Impacts Overall Map, Shaw Plant T1
6. Figure 8B: Jurisdictional Impacts Wetland A, Shaw Plant T1
7. Figure 8C: Jurisdictional Impacts Potentially Isolated Wetland, Shaw Plant T1
8. Figure 8D: Jurisdictional Impacts Intermittent Channel Impacts, Shaw Plant T1
9. Figure 8E: Jurisdictional Impacts Intermittent Channel Impacts, Shaw Plant T1
10. Figure 8F: Jurisdictional Impacts Intermittent Channel Relocation, Shaw Plant T1
11. Figure 8G: Jurisdictional Impacts Intermittent Channel Relocation, Shaw Plant T1
12. Figure 8H: Jurisdictional Impacts Intermittent Channel Impacts, Shaw Plant T1
13. Figure 12: USGS Topographic Map, Alternative Site 2
14. Sheet C403: Pond Plan – Page 1
15. Sheet C404 Pond Plan – Page 2



Legend

- Intermittent_stream
- CHANNEL ALIGNMENT
- INTERMITTENT CHANNEL BUFFER
- CHANNEL BUFFER

--- Intermittent Channel (Stream 2)
 Approximate limits of flood plain (based on FEMA Map 9/27/2007) were obtained from the October 2012 survey map provided by Centerline Surveying Systems.

0 150 300 600 900 1,200 Feet

AERIAL MAP

7300 GA HWY 140
 Adairsville, GA 30103

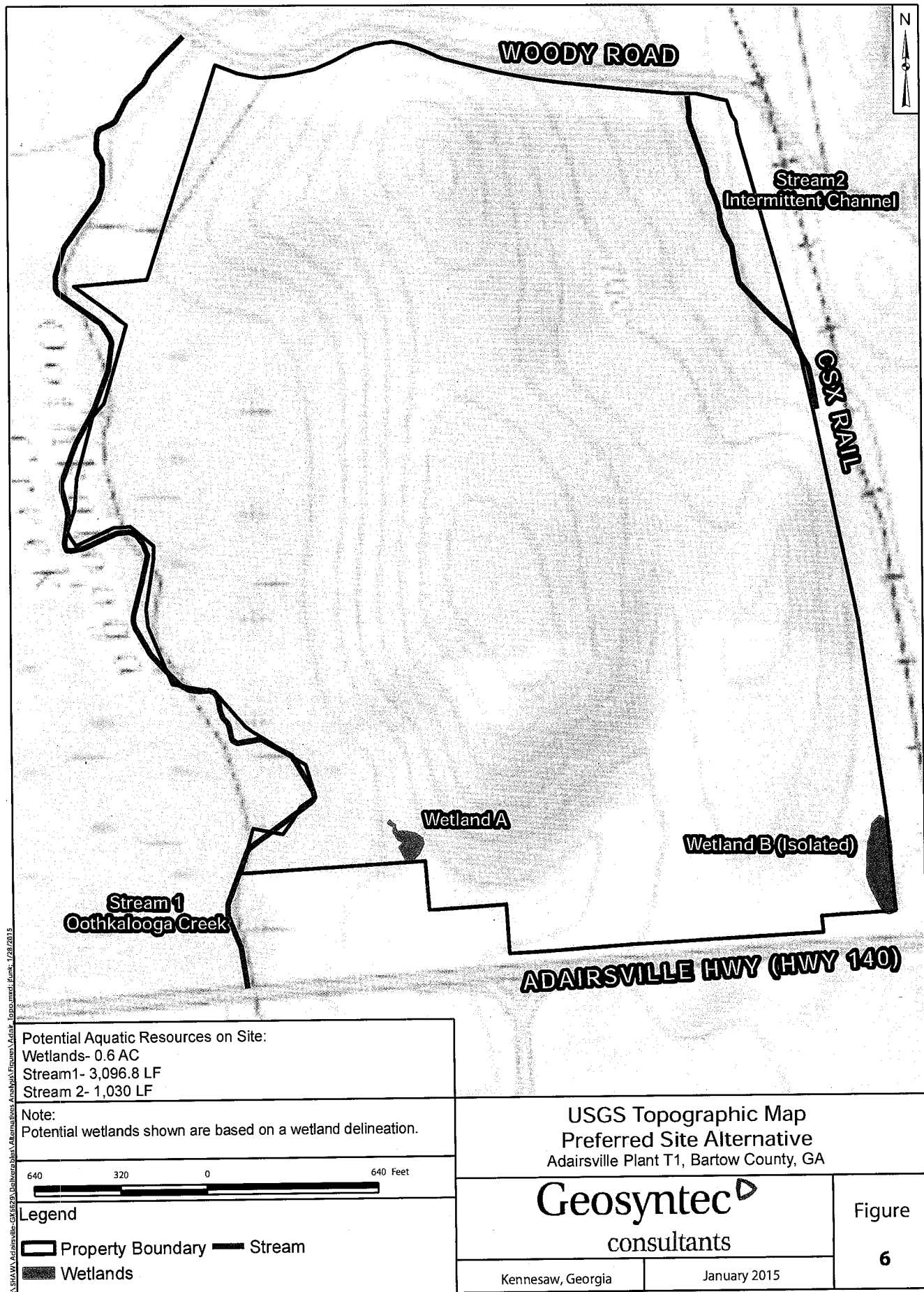
Geosyntec[®]
 consultants

Figure

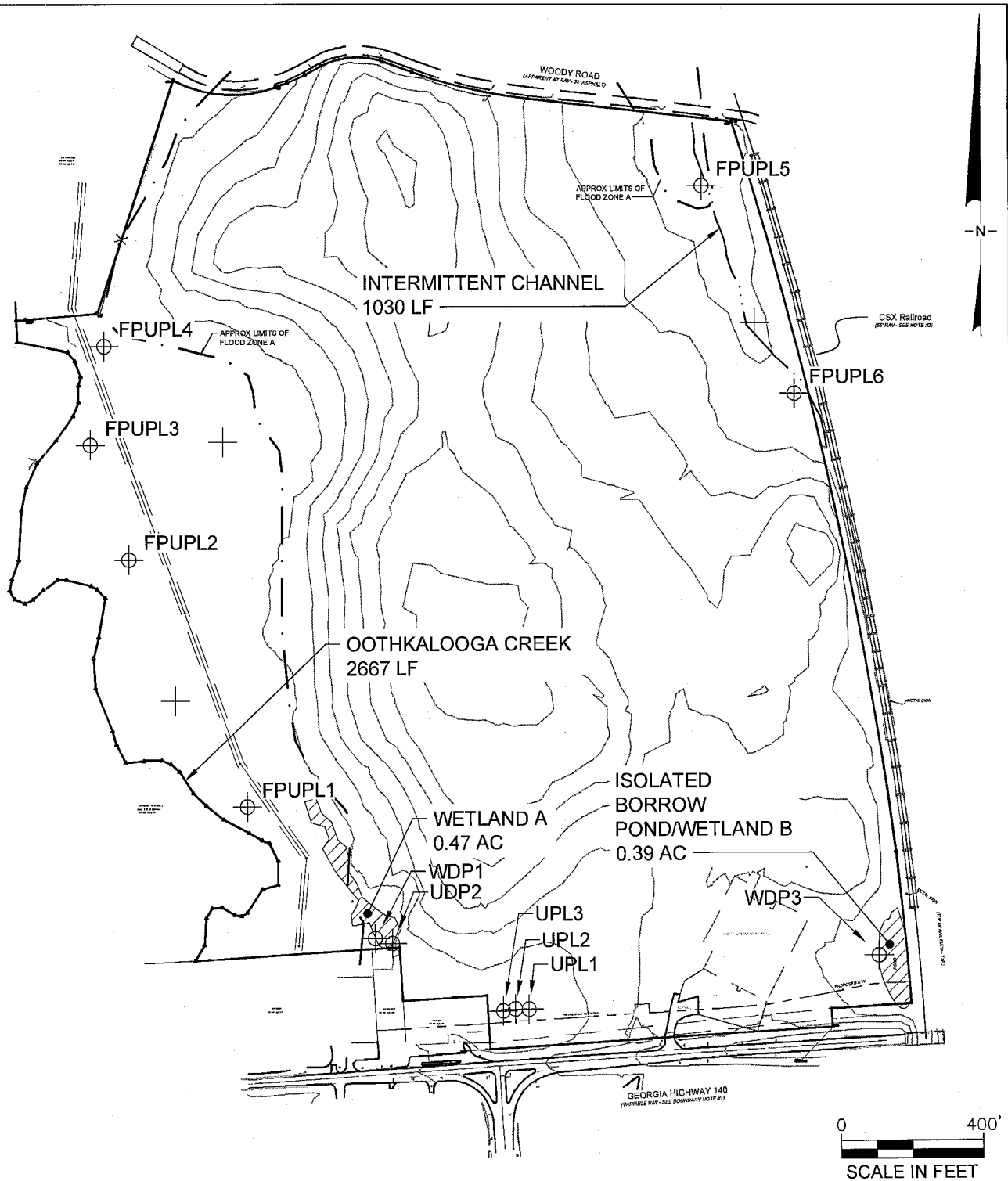
2

Kennesaw, Georgia

September 2014



L:\CADD\SHAW INDUSTRIES\PLANT T1 - GK5629\FIGURES\5629-F007 JURISDICTIONAL AREAS



LEGEND

	PROPERTY LINE		DELINEATION DATA POINTS
	PROPOSED ROW LINE		ADDITIONAL SOIL DATA POINTS
	100 YR FLOOD PLAIN		
	INTERMITTENT CHANNEL		
	WETLANDS		

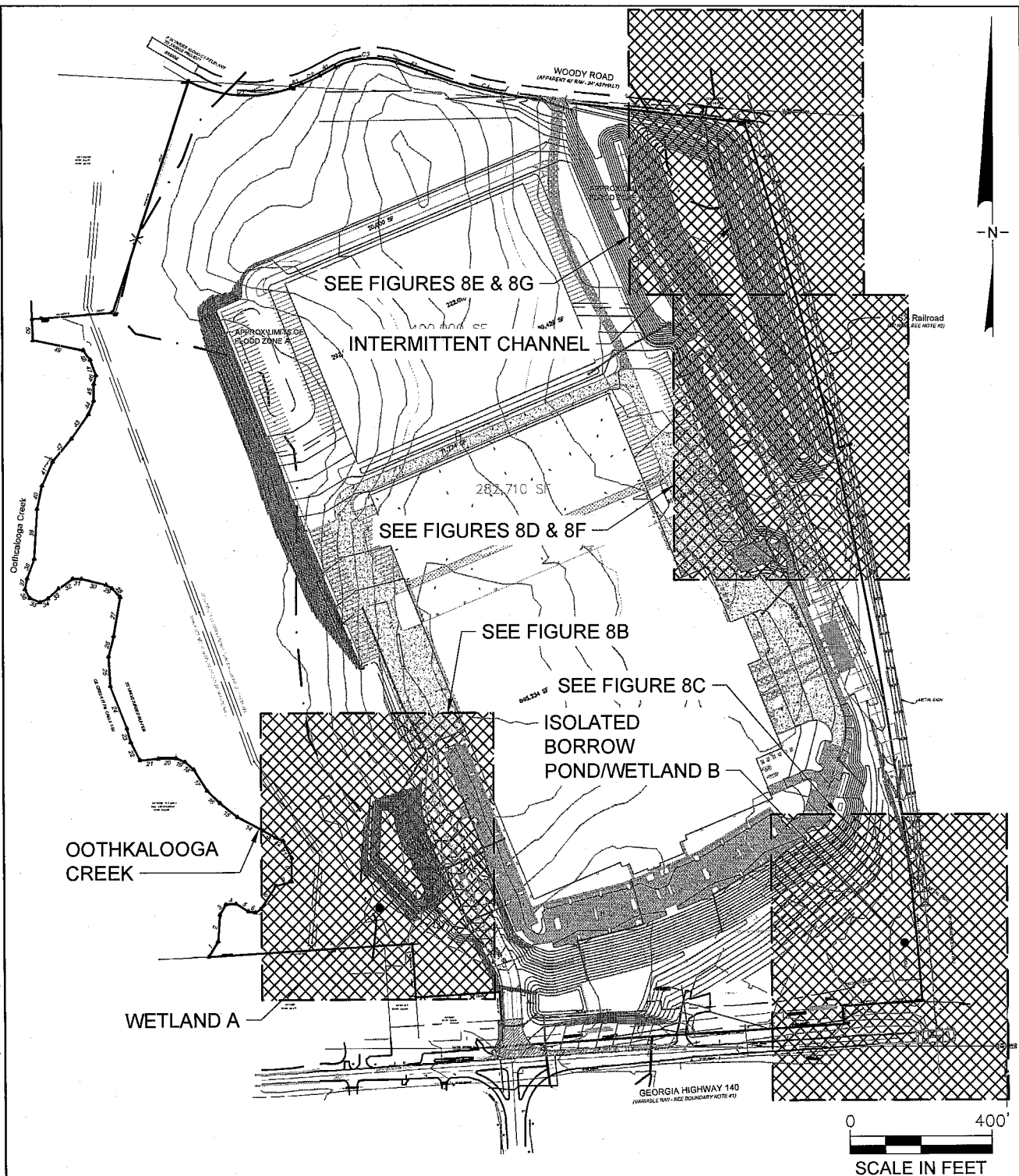
JURISDICTIONAL AREAS SHAW PLANT T1 ADAIRSVILLE, GEORGIA

Geosyntec
consultants

FIGURE
7

PROJECT NO: GK5629

SEPTEMBER 2014



LEGEND

	PROPERTY LINE
	PROPOSED ROW LINE
	100 YR FLOOD PLAIN
	INTERMITTENT CHANNEL
	WETLANDS

JURISDICTIONAL IMPACTS
OVERALL MAP
SHAW PLANT T1
ADAIRSVILLE, GEORGIA

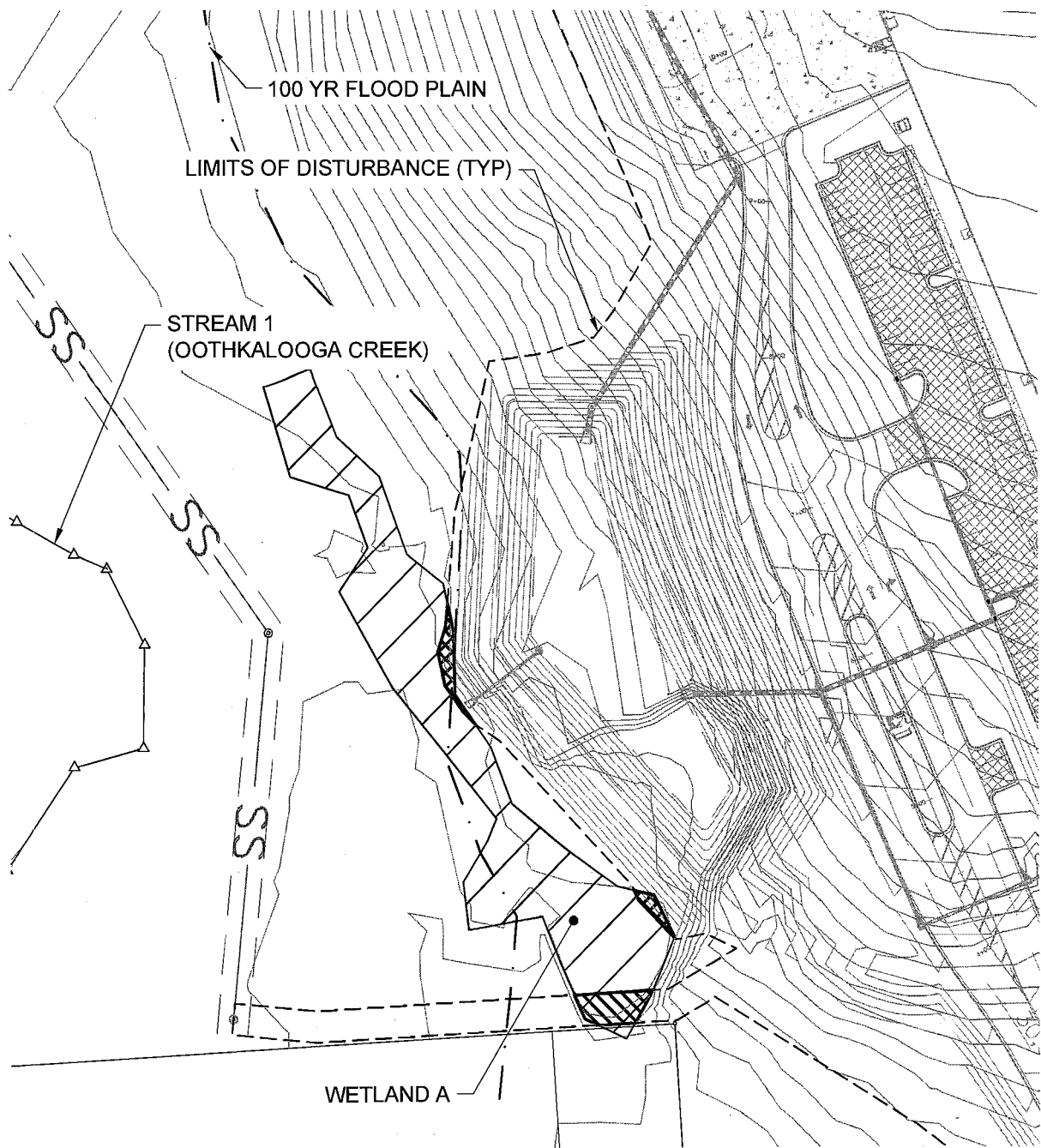
Geosyntec
consultants

FIGURE
8A









PROJECT NO: GK5629

AUGUST 2014

L:\CADD\SHAW INDUSTRIES\PLANT T1 - GK5629\FIGURES\5629-F009 WETLAND A IMPACTS



LEGEND

-  PROPERTY LINE
-  PROPOSED ROW LINE
-  100 YR FLOOD PLAIN
-  INTERMITTENT CHANNEL
-  LIMITS OF DISTURBANCE
-  WETLANDS
-  WETLAND A IMPACTS - 0.02 AC
(SANITARY SEWER INSTALLATION)
-  WETLAND A IMPACTS - 0.01 AC
(GRADING OPERATIONS)

0 100'
SCALE IN FEET

JURISDICTIONAL IMPACTS
WETLAND A
SHAW PLANT T1
ADAIRSVILLE, GEORGIA

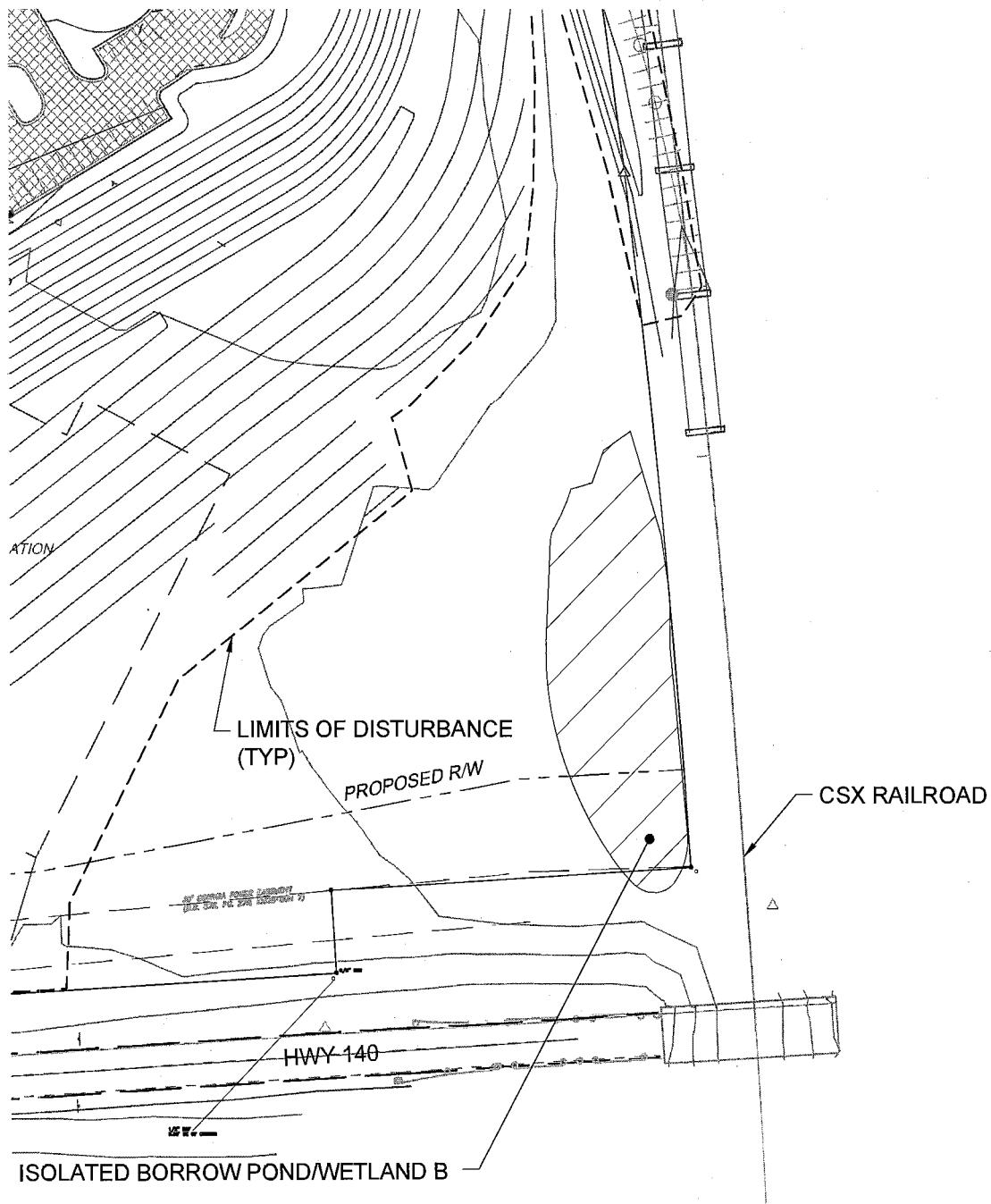
Geosyntec
consultants

PROJECT NO: GK5629

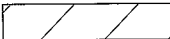
AUGUST 2014

FIGURE
8B

L:\CADD\SHAW INDUSTRIES\PLANT T1 - GK5629\FIGURES\F010 ISOLATED WETLAND IMPACTS



LEGEND

- PROPERTY LINE
- - - PROPOSED ROW LINE
- . - 100 YR FLOOD PLAIN
- . . . INTERMITTENT CHANNEL
- - - LIMITS OF DISTURBANCE
-  WETLANDS

NOTE:
NO IMPACTS ARE PROPOSED TO THE
ISOLATED WETLAND.

0 100'
SCALE IN FEET

JURISDICTIONAL IMPACTS
POTENTIALLY ISOLATED WETLAND
SHAW PLANT T1
ADAIRSVILLE, GEORGIA

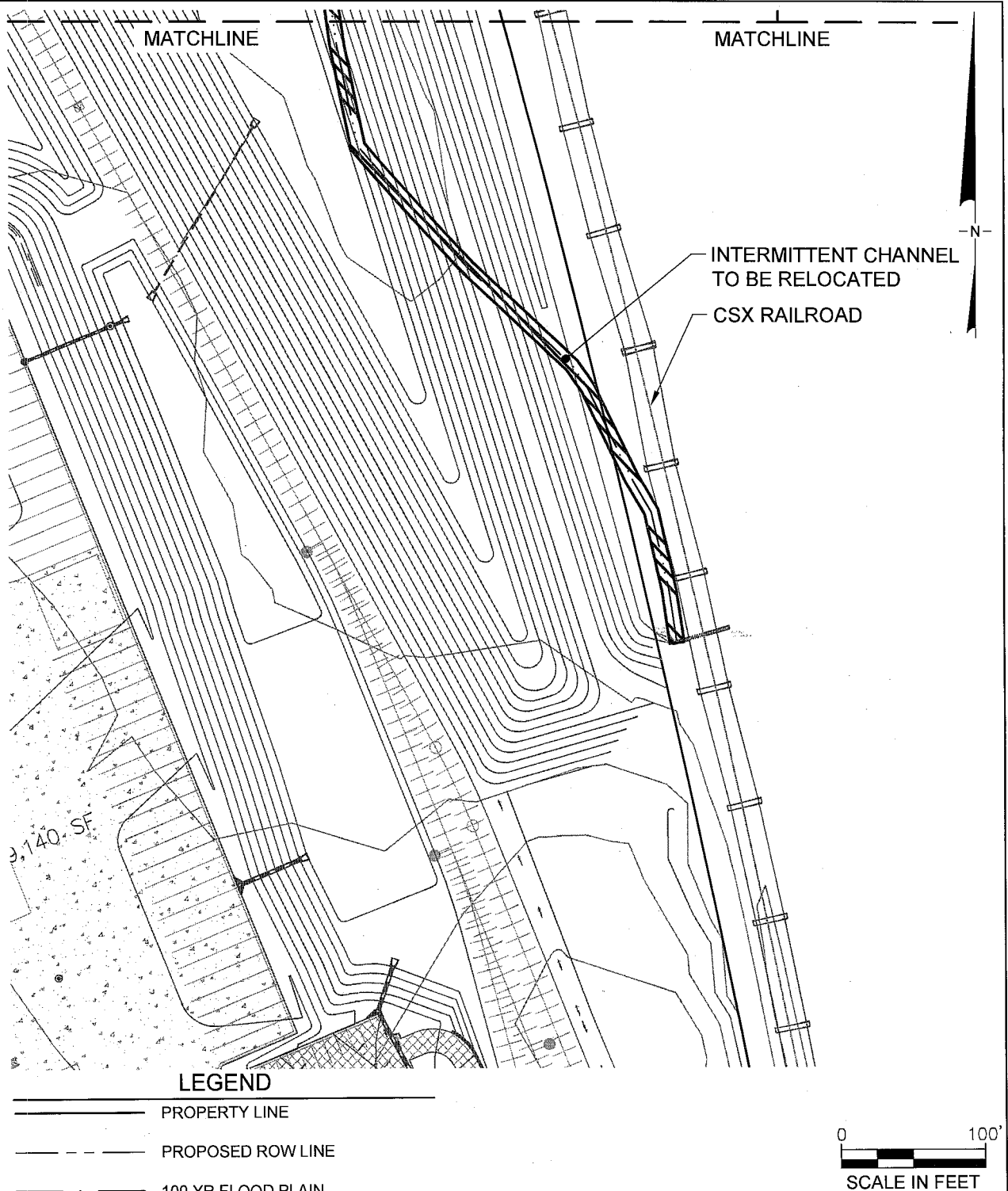
Geosyntec
consultants

FIGURE
8C

PROJECT NO: GK5629

AUGUST 2014

L:\CADD\SHAW INDUSTRIES\PLANT T1 - GK5629\FIGURES\F011-12 CHANNEL IMPACTS



JURISDICTIONAL IMPACTS
INTERMITTENT CHANNEL IMPACTS
(1 OF 2)
SHAW PLANT T1
ADAIRSVILLE, GEORGIA

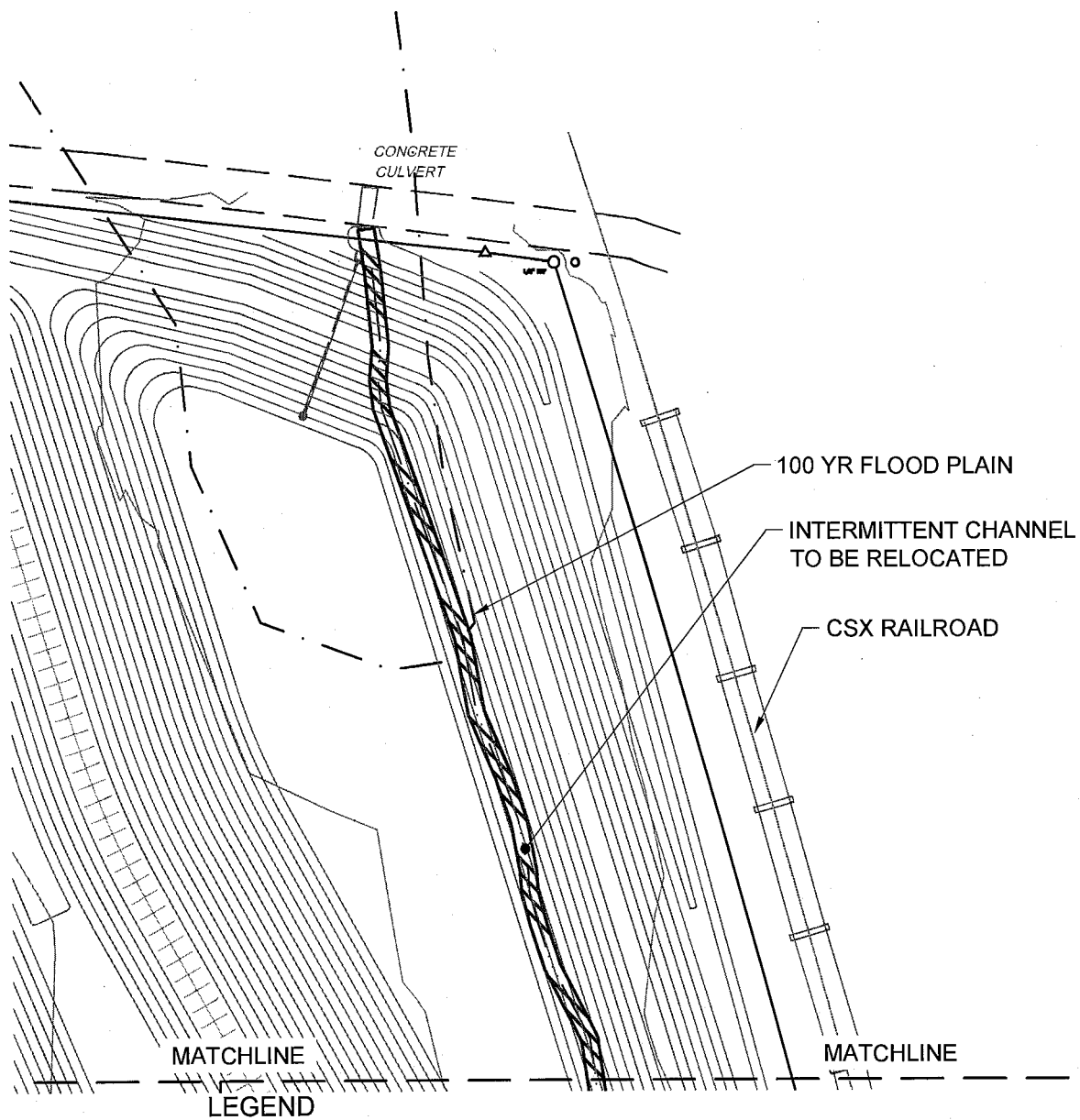
Geosyntec
consultants


FIGURE
8D

PROJECT NO: GK5629

AUGUST 2014

L:\CADD\SHAW INDUSTRIES\PLANT T1 - GK5629\FIGURES\5629-F011-12 CHANNEL IMPACTS



- PROPERTY LINE
- - - PROPOSED ROW LINE
- . - 100 YR FLOOD PLAIN
- . . . INTERMITTENT CHANNEL
-  INTERMITTENT CHANNEL IMPACTS - 1030 LF

0 100'

SCALE IN FEET

JURISDICTIONAL IMPACTS
INTERMITTENT CHANNEL IMPACTS
(2 OF 2)
SHAW PLANT T1
ADAIRSVILLE, GEORGIA

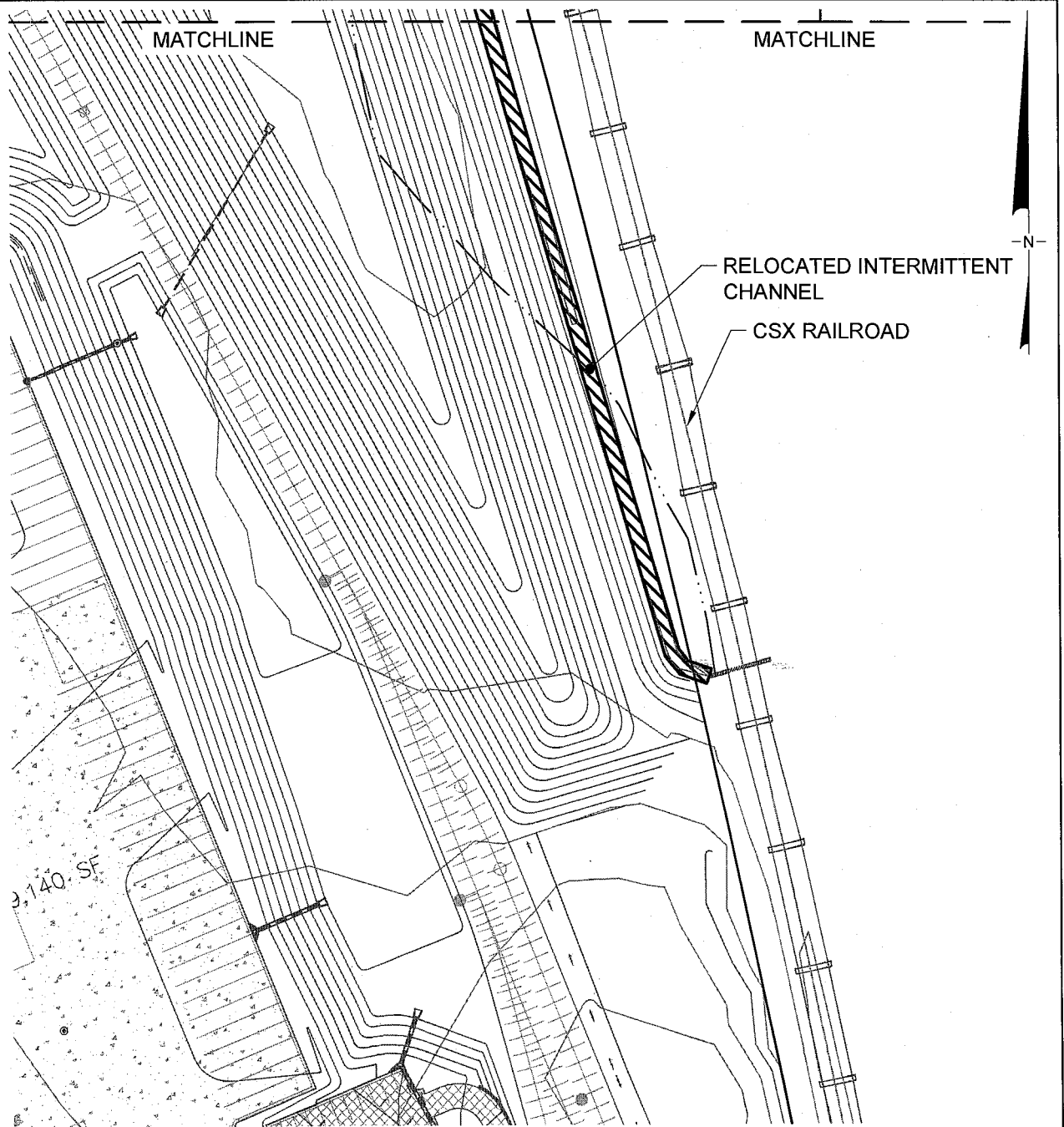
Geosyntec
consultants

FIGURE
8E

PROJECT NO: GK5629

AUGUST 2014

L:\CADD\SHAW INDUSTRIES\PLANT T1 - GK5629\FIGURES\F013-14 CHANNEL RELOCATION



LEGEND

- PROPERTY LINE
- PROPOSED ROW LINE
- 100 YR FLOOD PLAIN
- INTERMITTENT CHANNEL
- RELOCATED INTERMITTENT CHANNEL
1036 LF

NOTE:
PROPOSED SITE DEVELOPMENT
SHOWN ON FIGURE IS
PRELIMINARY AT THIS TIME AND
HAS NOT BEEN FINALIZED.

0 100'
SCALE IN FEET

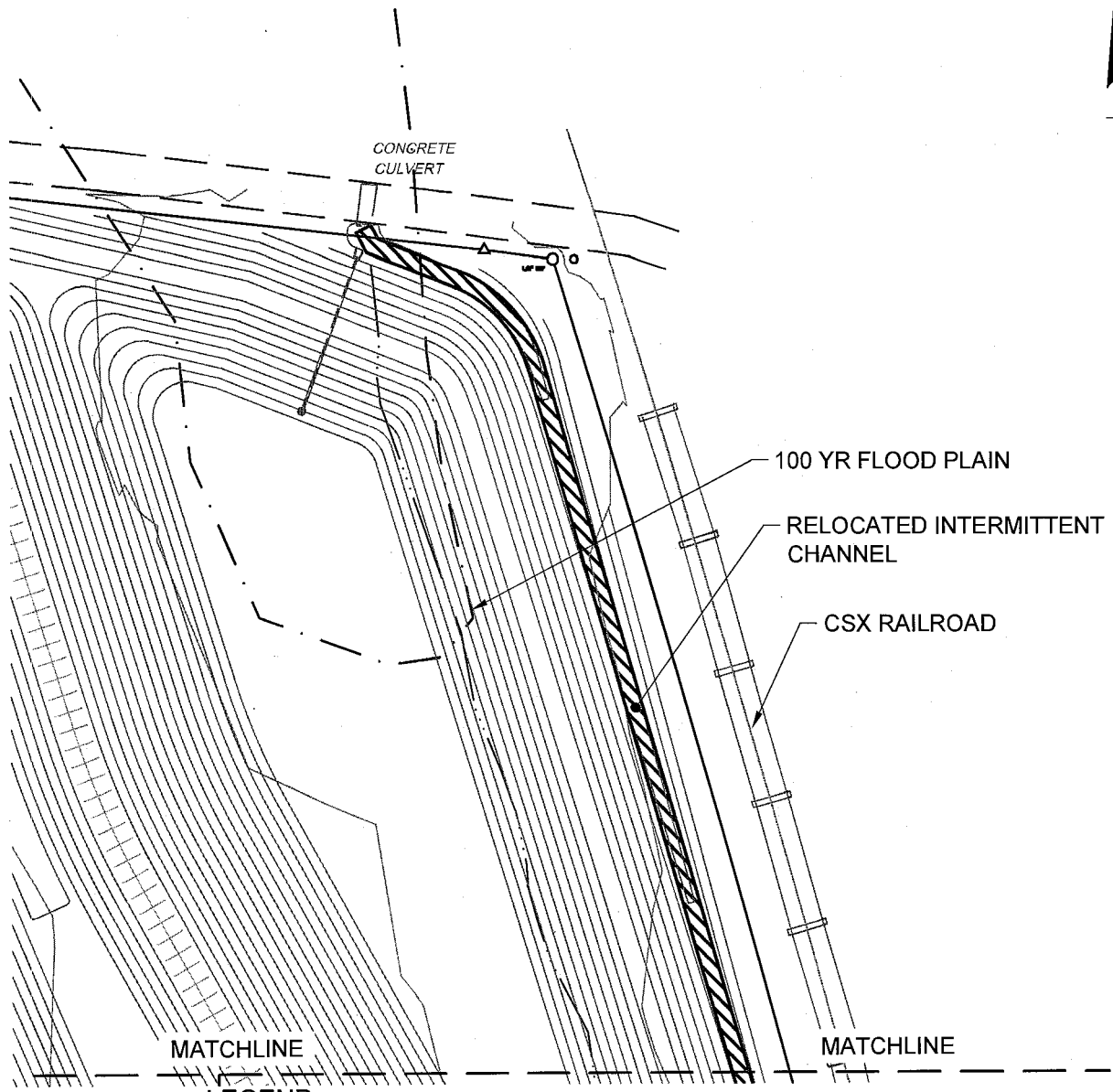
JURISDICTIONAL IMPACTS
INTERMITTENT CHANNEL RELOCATION
(1 OF 2)
SHAW PLANT T1
ADAIRSVILLE, GEORGIA


Geosyntec
consultants

FIGURE
8F

PROJECT NO: GK5629

AUGUST 2014



- LEGEND**
- PROPERTY LINE
 - - - PROPOSED ROW LINE
 - . - 100 YR FLOOD PLAIN
 - . . . INTERMITTENT CHANNEL
 -  RELOCATED INTERMITTENT CHANNEL
1036 LF

NOTE:
PROPOSED SITE DEVELOPMENT
SHOWN ON FIGURE IS
PRELIMINARY AT THIS TIME AND
HAS NOT BEEN FINALIZED.



JURISDICTIONAL IMPACTS
INTERMITTENT CHANNEL RELOCATION
(2 OF 2)
SHAW PLANT T1
ADAIRSVILLE, GEORGIA

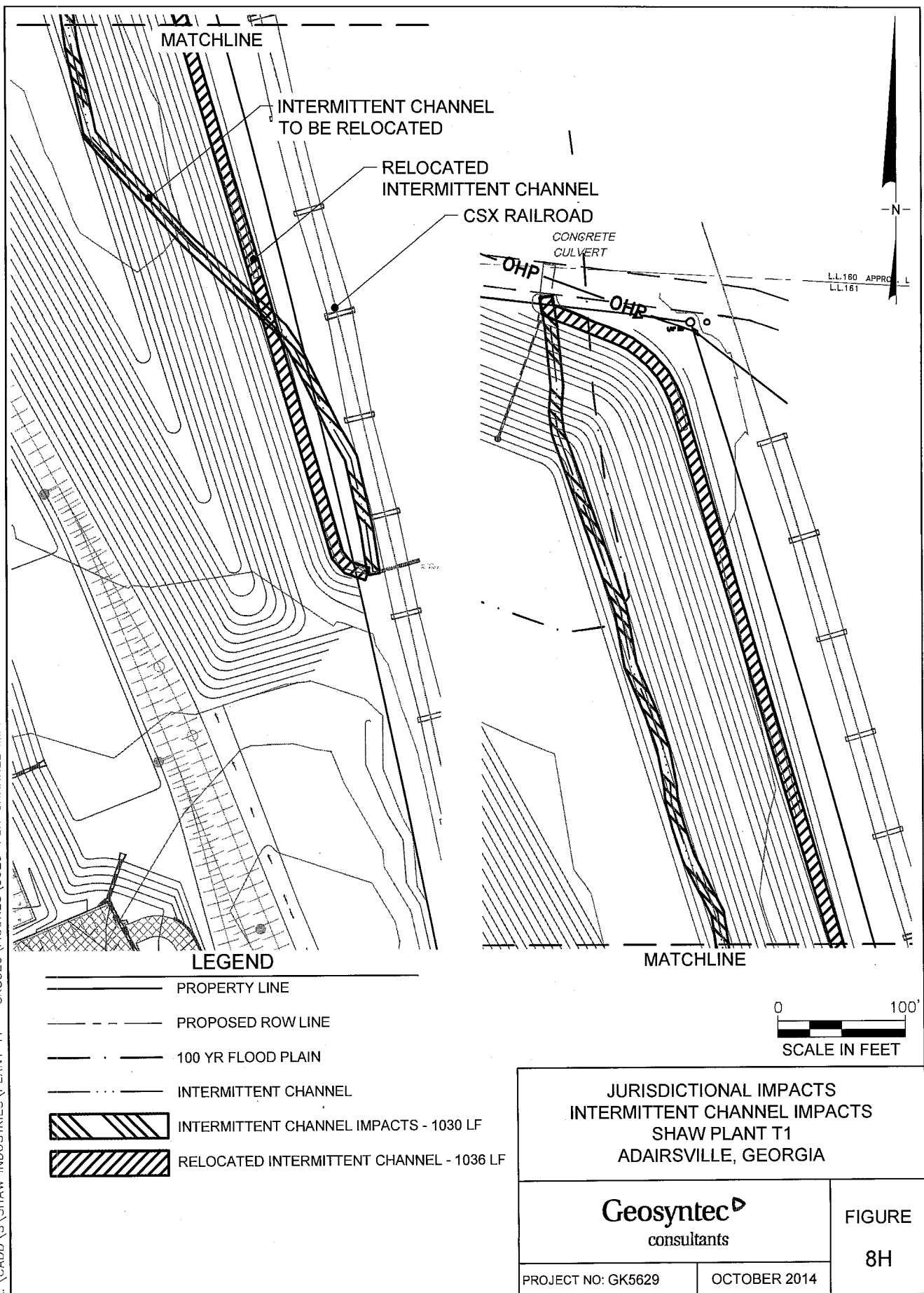
Geosyntec
consultants

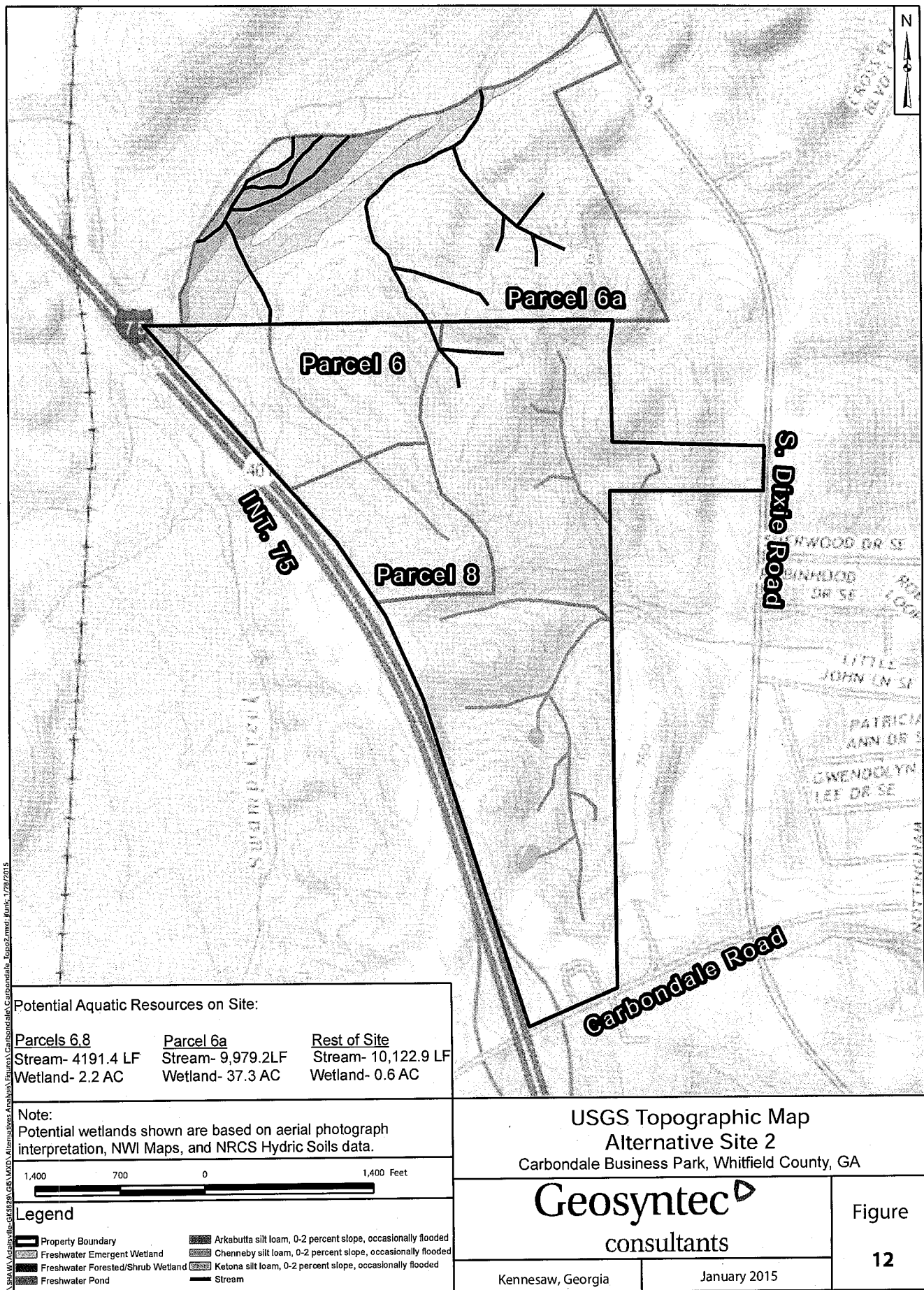
FIGURE
8G

PROJECT NO: GK5629

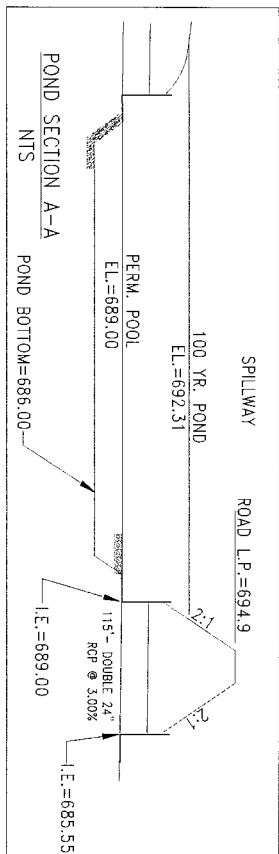
AUGUST 2014

L:\CADD\SHAW INDUSTRIES\PLANT T1 - GK5629\FIGURES\5629-F8H CHANNEL IMPACTS SIDE BY SIDE

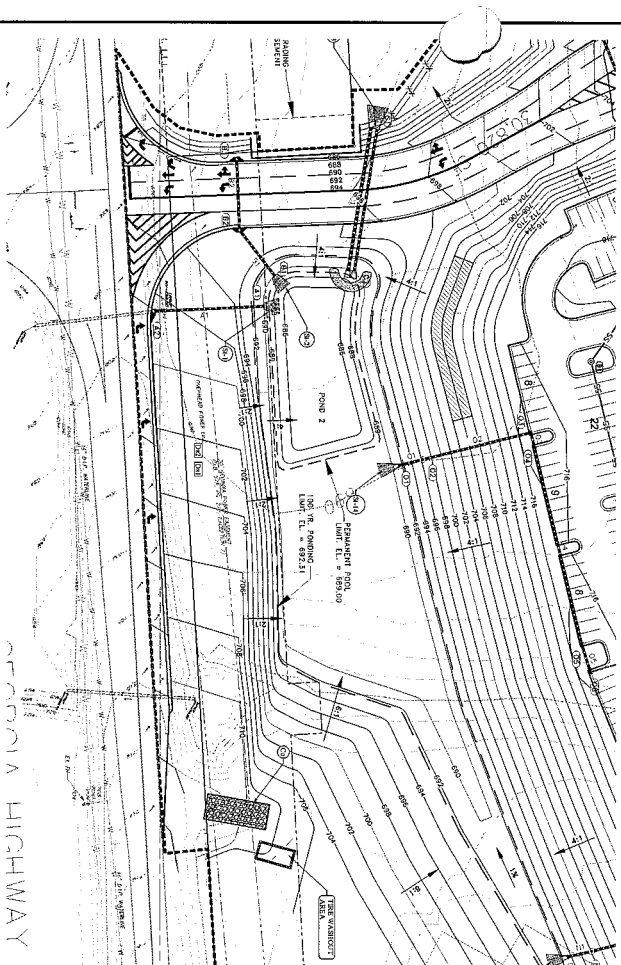
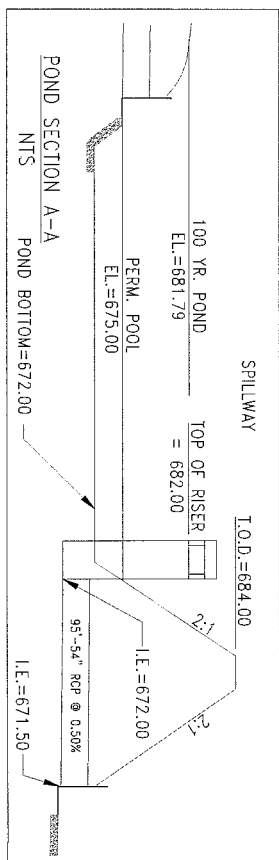




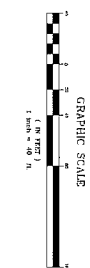
NTS



NTS



POND 2 --PLAN
NTS



**24 HOUR CONTACT
TOMMY THOMPSON**

706-275-4518



**Know what's below.
Call before you dig.**

GSWCC LEVEL II CERTIFICATION NUMBER

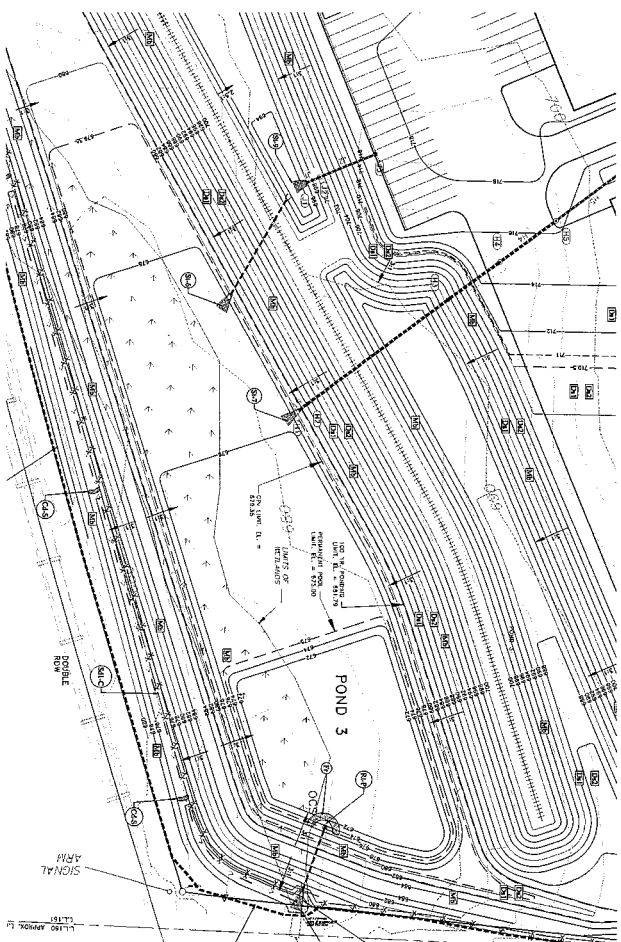
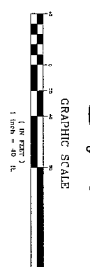
POND 3 - PLAN

NTS

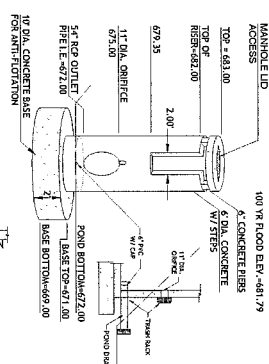
GRAPHIC SCALE

1 inch = 40 ft.

PROFIT POND OUTLET



POND 3 -PLAN



NOTE: STRUCTURE TO BE EQUIPPED WITH STEPS ON INSIDE WALL
SAFETY PLATFORMS REQUIRED
OUTLET CONTROL STRUCTURE (OCS)
DETAIL (NTS)
BOND 3

SHEET NO.
C404

SWCC NO. _____
SHEET TITLE _____
POND _____
PLAN _____

SHAW PLANT TI
ADAIRSVILLE, GA
LOCATED IN LAND LOTS 160 & 161
15TH DISTRICT, 3RD SECTION

SOUTHLAND
ENGINEERING
CIVIL ENGINEERS • LAND SURVEYORS • LAND PLANNERS
114 OLD MILL ROAD, CARTERSVILLE, GEORGIA 30120

REVISIONS:		
	DATE	DESCRIPTION
1	06/09/14	MISC. SITE AND GRADING REVISIONS
2	07/22/14	REVISE POND 2
3	07/31/14	REVISE POND 3
4	08/26/14	ADD ADDITIONAL BUILDINGS