

Richland Creek Reservoir

Department of the Army Permit Issued: October 9, 2015

Location: Paulding County, Georgia

Basin: ACT (Alabama-Coosa-Tallapoosa)

Watershed: Etowah River

Applicant: Paulding County Board of Commissioners

Purpose: Water supply

Proposed Size: 305 Acres Normal Pool

Estimated Safe Yield: 35 million gallons per day (MGD)

Estimated impacts to USACE Jurisdiction: 1.34 acres of wetlands / 50,201.28 linear feet of waters of the United States

Proposed Compensatory Mitigation: Commercial mitigation bank credits

Application received: October 5, 2011

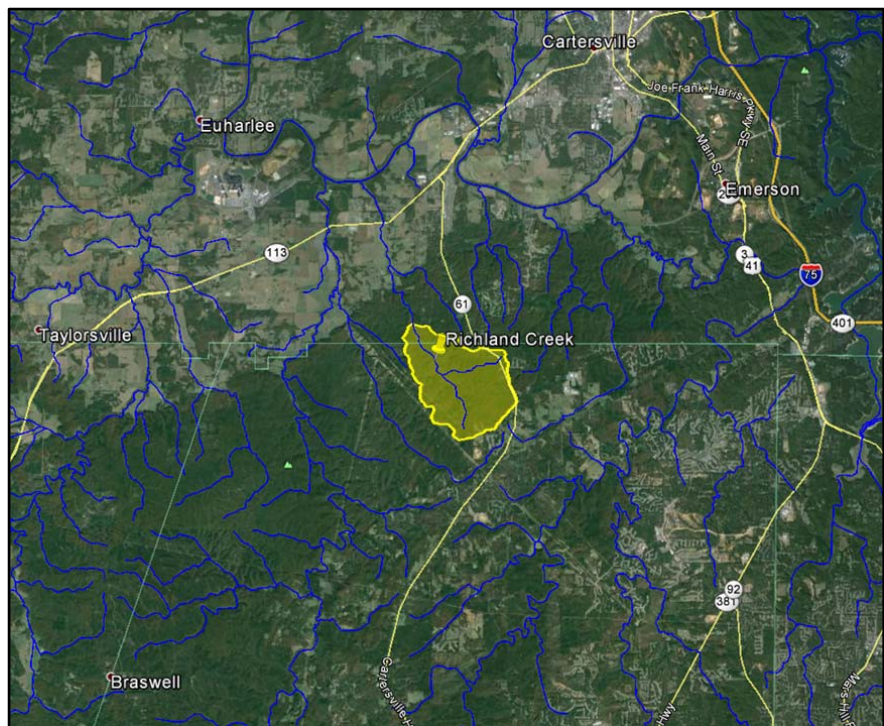
Joint Public Notice issued: November 23, 2011

Coordinating Agencies:

- Georgia Department of Natural Resources (Environmental Protection Division)
- U.S. Environmental Protection Agency
- U.S. Fish and Wildlife Service
- U.S. Army Corps of Engineers Mobile District

Documents:

- [Joint Public Notice](#)
(Nov. 23, 2011)



Pictured: Approximate watershed upstream of the proposed Richland Creek Reservoir dam in Paulding County, Ga.

U.S. ARMY CORPS OF ENGINEERS SAVANNAH DISTRICT

100 W Oglethorpe Ave, Savannah, GA 31401

Regulatory Division Phone: 1-800-448-2402 Email: CESAS-RD@usace.army.mil

www.sas.usace.army.mil