

Value to the Nation

Garden City Terminal

- 4th largest container port in US
- Largest single terminal operation in North America at 1,200 acres
- Fastest growing container port in the Nation over the last 10+ years
- 3.85M TEU through-put in Georgia's FY2017
- Supports in GA over 369,000 jobs, \$20.4B in income and \$2.5B in state and local taxes annually
- Supports in SC over 19,700 jobs, \$959M in income, \$147M in state and local taxes annually
- \$84.1B in revenue (9% of Georgia's total sales) annually
- \$4.3B in revenue (1.3% of South Carolina's total sales) annually

Oxygen Injection System
Remove the incremental effects of the project on dissolved oxygen

Meeting Areas
Construct two meeting areas to facilitate two-way traffic

CSS Georgia Removal
Recover and preserve remains of the Confederate Ironclad

Project Information

- Deepen from 42' to 47' NED selected plan
- \$973M total first cost (FY17 price levels)
- 75% federal/25% non-federal cost share (\$732,000,000/\$241,000,000)
- \$282M annual net benefits
- Benefits derived from increased transportation efficiencies
- 7.3:1 @ 2.875% (FY17 discount rate) benefit to cost ratio
- Projected to create 11,000+ jobs nationwide, 3,700+ bi-state, 2,400+ locally

Freshwater Wetlands Preservation
Acquire freshwater wetlands that would become part of the SNWR

NSBL&D Fish Bypass
Restore access to historical spawning grounds for endangered sturgeon

Water Supply Impoundment
Mitigate for chloride impacts at the City of Savannah water treatment plant

Flow Re-Routing
Reduce salinity impacts to tidal freshwater wetlands in and near SNWR

Marsh Restoration
Compensate for lost brackish marsh by restoring DMCA 1S

Striped Bass Stocking
Compensate for adverse impacts to Striped bass spawning and nursery habitats

Kings Island Turning Basin
Deepen and enlarge to 1,600-foot x 1,600-foot

Boat Ramp
Restore boater access to the Back River

Upland Dredged Material Containment Areas
Increase capacity to accommodate deepening materials

Bend Wideners
Widen channel 100 ft. at three critical turns

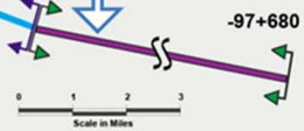
Channel Deepening
Remove approximately 24,000,000 cubic yards of material to deepen from 42 to 47 feet

Channel Extension
Extend entrance channel across ocean bar an additional 7.1 miles

Monitoring & Adaptive Management
Implementing adaptive management features if post-construction monitoring shows them to be needed

Navigation Feature

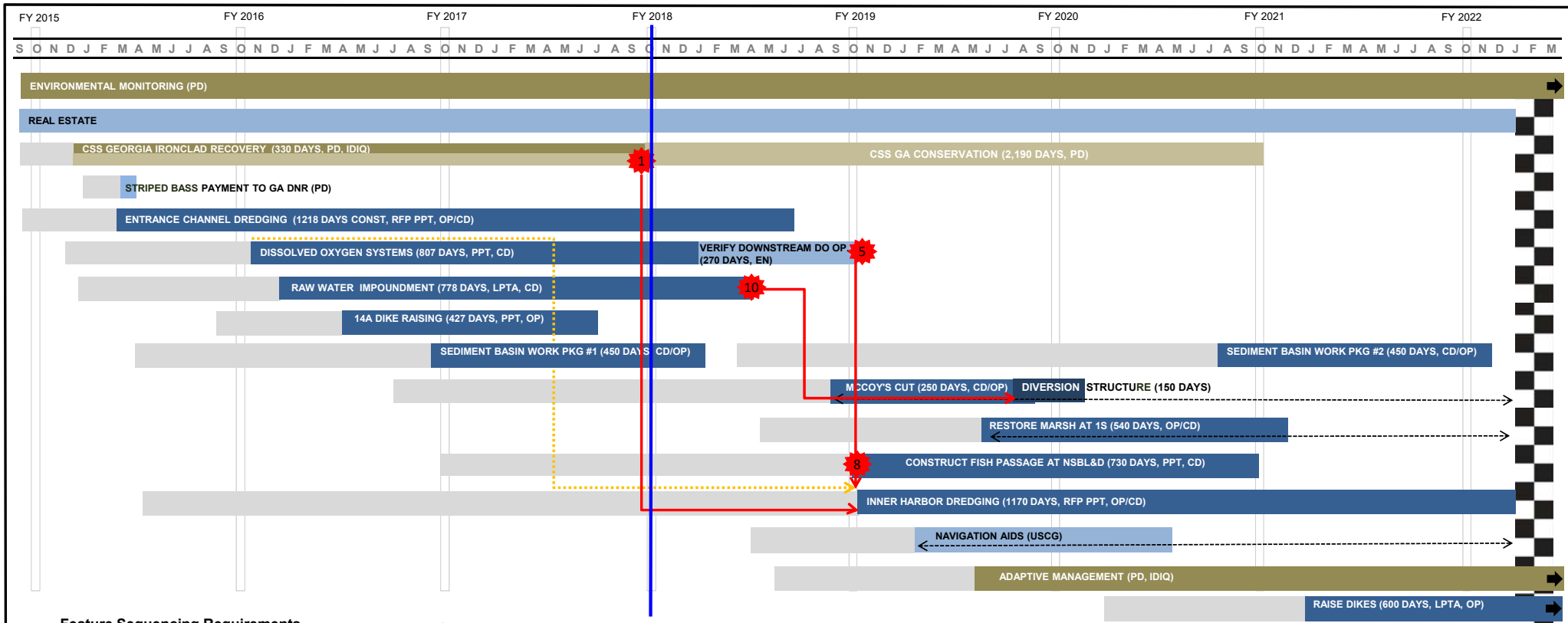
Mitigation Feature



Savannah Harbor Expansion Project (SHEP)

BUILDING STRONG®

AS OF 1 OCT 2017

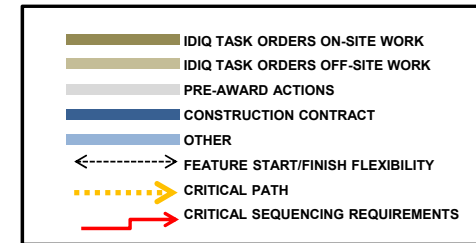


Feature Sequencing Requirements

- 1. CSS Georgia must be removed prior to dredging in that area (Station 58+500 to 59+000)
- 2. Mechanical or hydraulic dredge less than 14-inch can be used to construct broad berm at mouth of sediment basin
- 3. Mechanical dredge must be used for deepening the McCoy Cut/Middle/Little Back River areas
- 4. Cadmium-laden sediments should be distributed evenly across the CDG (14A and/or 14B)
- 5. Hutchinson Island oxygen injection system must be operational prior to commencement of dredging in the inner harbor
- 6. Plant McIntosh oxygen injection system must be operational no later than one year after commencement of dredging in the inner harbor
- 7. Real estate acquisition process for fish bypass must commence prior to/concurrent with start of entrance channel dredging
- 8. Construction of fish bypass must start prior to/concurrent with start of inner harbor dredging and be operational within two years after construction start date
- 9. Striped bass payment made prior to commencement of dredging
- 10. Construction of raw water storage impoundment prior to construction of McCoy Cut diversion structure and the completion of inner harbor dredging
- 11. Construction of sediment basin sill prior to broad berm and removal of Tidegate
- 12. Construction of plug at the lower arm near McCoy's Cut prior to construction of diversion structure
- 13. Construction of boat ramp should occur prior to closure of Rifle Cut (optional)
- 14. All mitigation complete prior to or concurrent with the completion of channel deepening

Environmental Windows

1. Construction of McCoy Cut Diversion structure must occur between May 15 and Nov 1
2. No hopper dredging conducted in the entrance channel between Apr 1 and Dec 14
3. No inner harbor dredging conducted upstream of Station +63 between Apr 1 and May 15
4. No downstream in-water work conducted near fish bypass between Feb 1 and May 31
5. No hopper dredging upstream of Station +4



US Army Corps of Engineers®
Savannah District

SHEP Construction

Assumes Unconstrained Funding FY17 through FY22

BUILDING STRONG®