
ENVIRONMENTAL ASSESSMENT
of Modifications to the
RAW WATER STORAGE
IMPOUNDMENT
APPENDIX A: FIGURES
SAVANNAH HARBOR EXPANSION PROJECT
Chatham County, Georgia and Jasper County, South Carolina

September 2013



**US Army Corps
of Engineers**
*Savannah District
South Atlantic Division*



Figure 1 - Project Vicinity Map



Existing Raw Water Pipeline

Hickory St

Access Road

Flat Rock Trace

Sandy Pass

Dogwood Cir

Raw Water Storage Property

95

Savannah National Wildlife Refuge

O'Leary Rd

O'Leary Rd

© 2012 Google

© USFWS

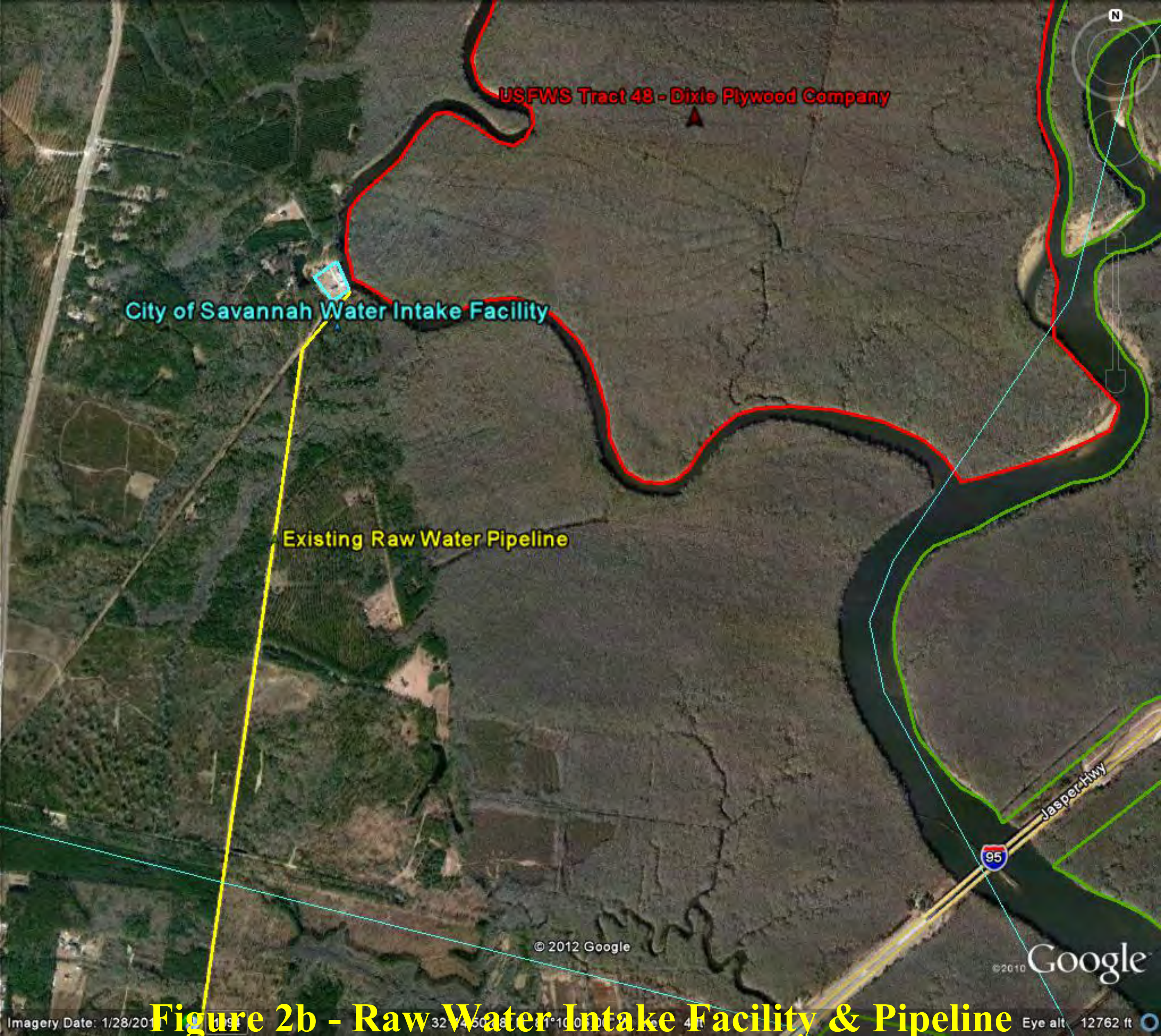
© 2010 Google

Imagery Date: 1/28/2011

1994

Figure 2 - Project Layout

Eye alt 7727 ft



City of Savannah Water Intake Facility

USFWS Tract 48 - Dixie Plywood Company

Existing Raw Water Pipeline

© 2012 Google

© 2010 Google

Figure 2b - Raw Water Intake Facility & Pipeline

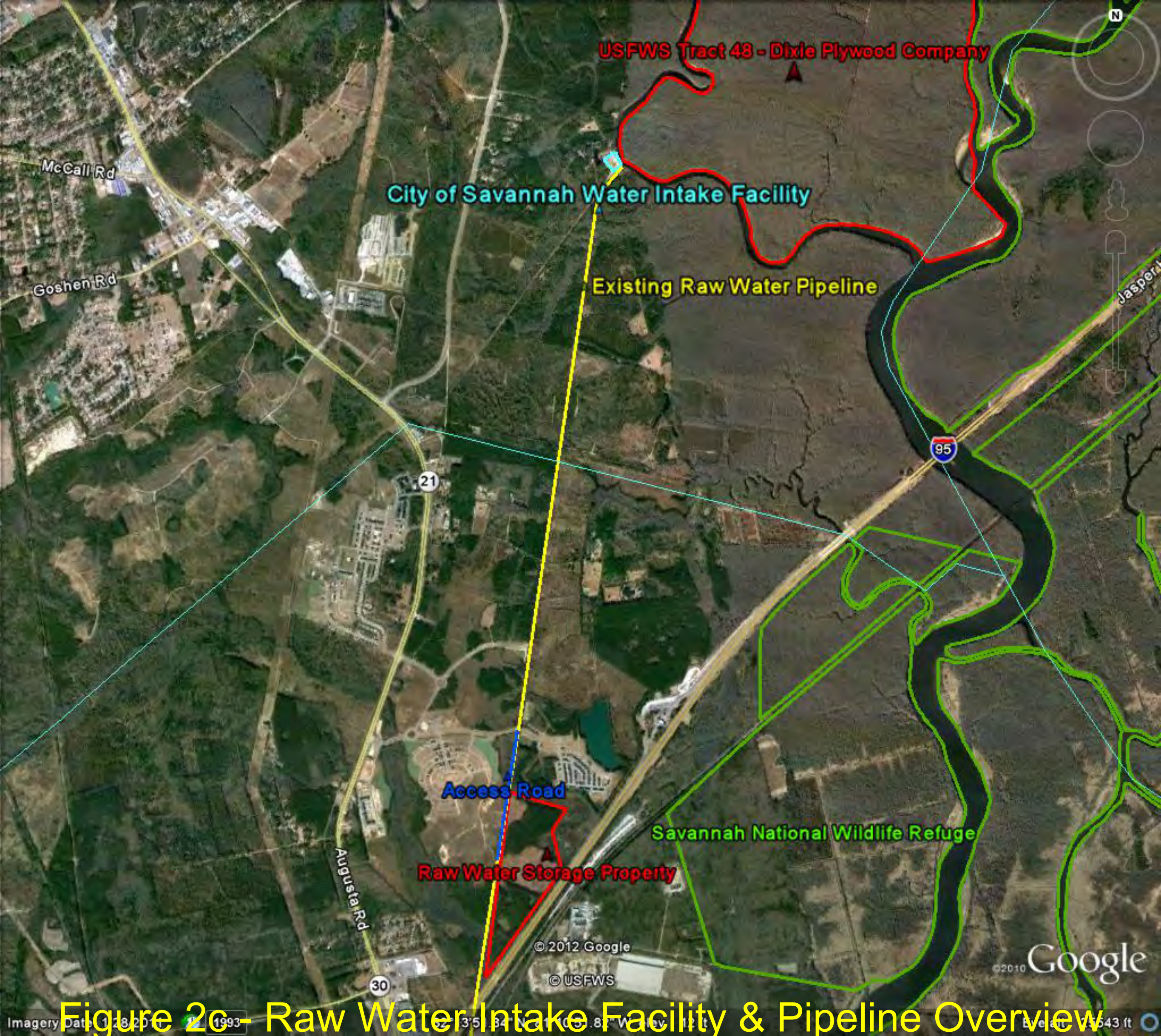


Figure 2c - Raw Water Intake Facility & Pipeline Overview

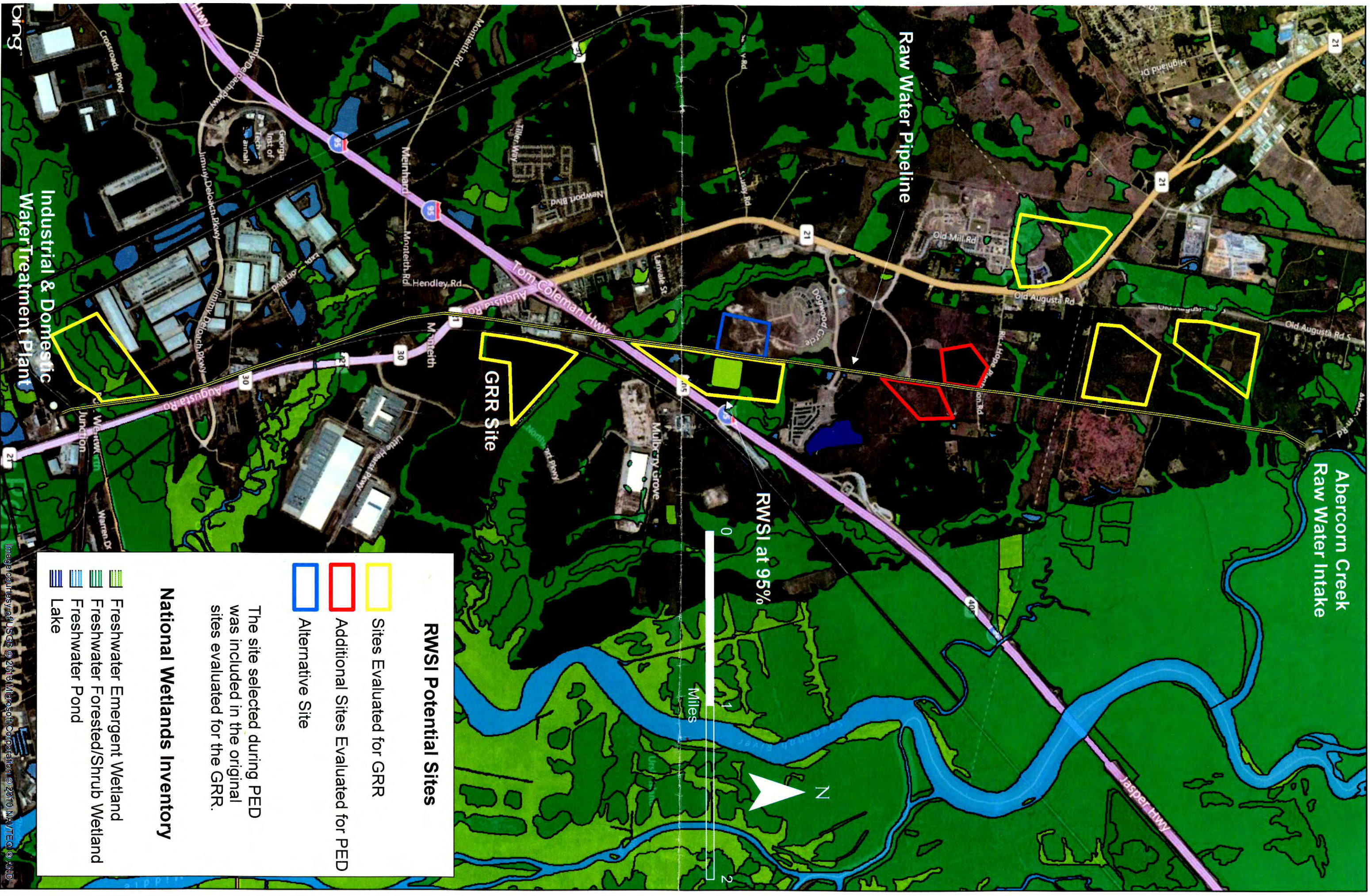
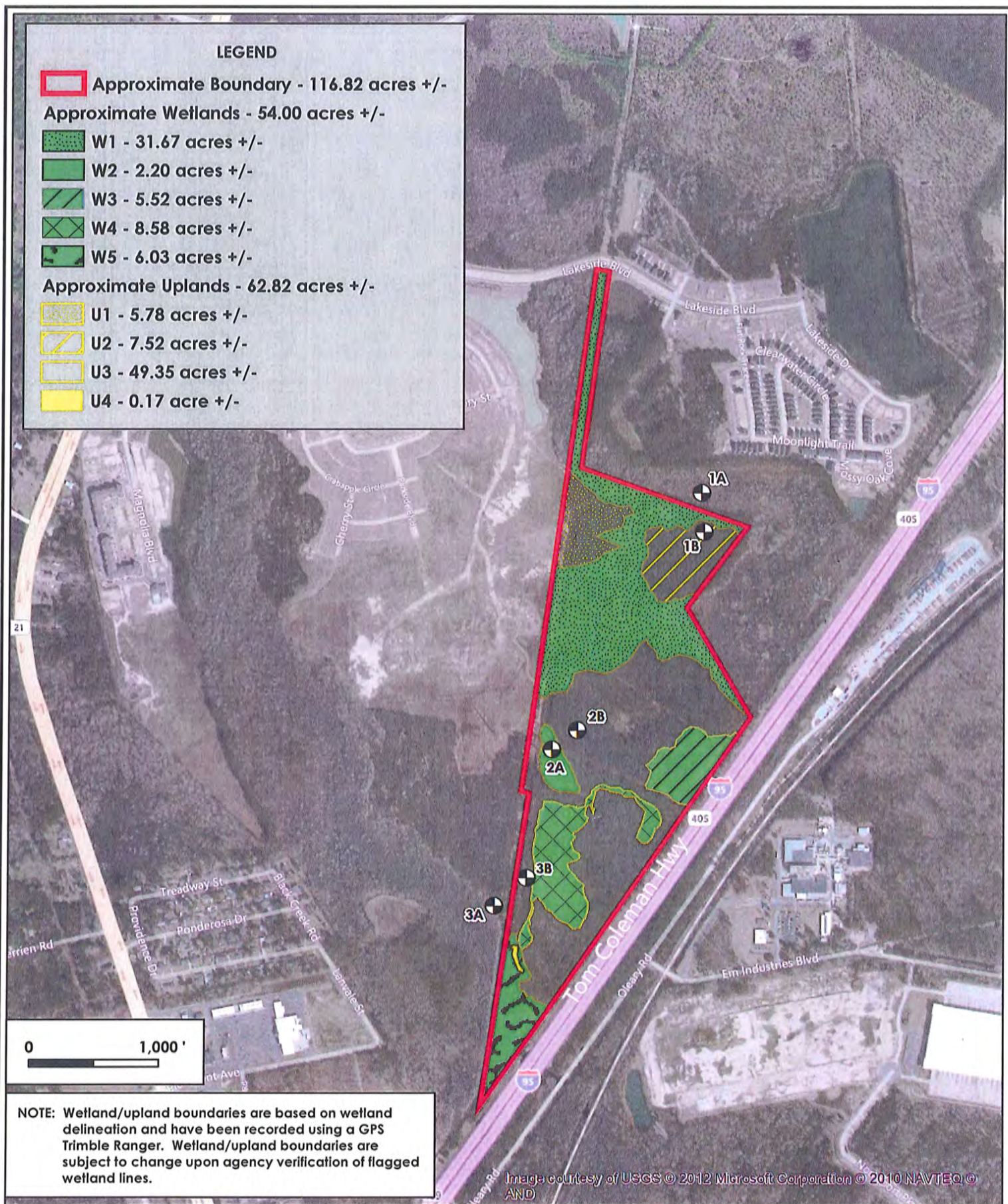




Figure 3 - Alternative Phase I Analysis



Figure 4 - Project Layout for Phase II Alternatives



 Environmental Resource Solutions Our Science. Your Success.	8711 Perimeter Park Blvd., Suite 1 Jacksonville, FL 32216 (904) 285-1397 mail@ersenvironmental.com	Savannah Raw Water Storage Wetlands Map & USACE Data Point Locations		Project No.: 12064	
				Exhibit No.: 3	
				Date: 7-10-12	
				Rev. Date: 10-3-12	

Aerial Source: Bing Maps (ArcGIS Online)

12064_Ex3_wetlands_datapoints_10-3-12.mxd

Figure 5 - Jurisdictional Wetlands

12064_Ex3_wetlands_datapoints_10-3-12.mxd