

DRY LAND APPROVED JURISDICTIONAL DETERMINATION FORM¹
U.S. Army Corps of Engineers

This form should be completed by following the instructions provided in Section IV of the JD Form Instructional Guidebook.

SECTION I: BACKGROUND INFORMATION

A. REPORT COMPLETION DATE FOR APPROVED JURISDICTIONAL DETERMINATION (JD): 9Nov2021

B. DISTRICT OFFICE, FILE NAME, AND NUMBER: Savannah, BE Solar Site, SAS-2021-00897

C. PROJECT LOCATION AND BACKGROUND INFORMATION:

State: GA County/parish/borough: Decatur City: Bainbridge
Center coordinates of site (lat/long in degree decimal format): Lat. 30.9097 °, Long. -84.5438 °
Universal Transverse Mercator:

Name of nearest waterbody: Twin Lakes
Name of watershed or Hydrologic Unit Code (HUC): 031300080604

- Check if map/diagram of review area is available upon request.
 Check if other sites (e.g., offsite mitigation sites, disposal sites, etc...) are associated with this action and are recorded on a different JD form.

D. REVIEW PERFORMED FOR SITE EVALUATION (CHECK ALL THAT APPLY):

- Office (Desk) Determination. Date: November 9, 2021
 Field Determination. Date(s): [Click here to enter a date.](#)

SECTION II: SUMMARY OF FINDINGS

A. RHA SECTION 10 DETERMINATION OF JURISDICTION.

There are **no** "navigable waters of the U.S." within Rivers and Harbors Act (RHA) jurisdiction (as defined by 33 CFR part 329) in the review area.

B. CWA SECTION 404 DETERMINATION OF JURISDICTION.

There are **no** "waters of the U.S." within Clean Water Act (CWA) jurisdiction (as defined by 33 CFR part 328) in the review area.

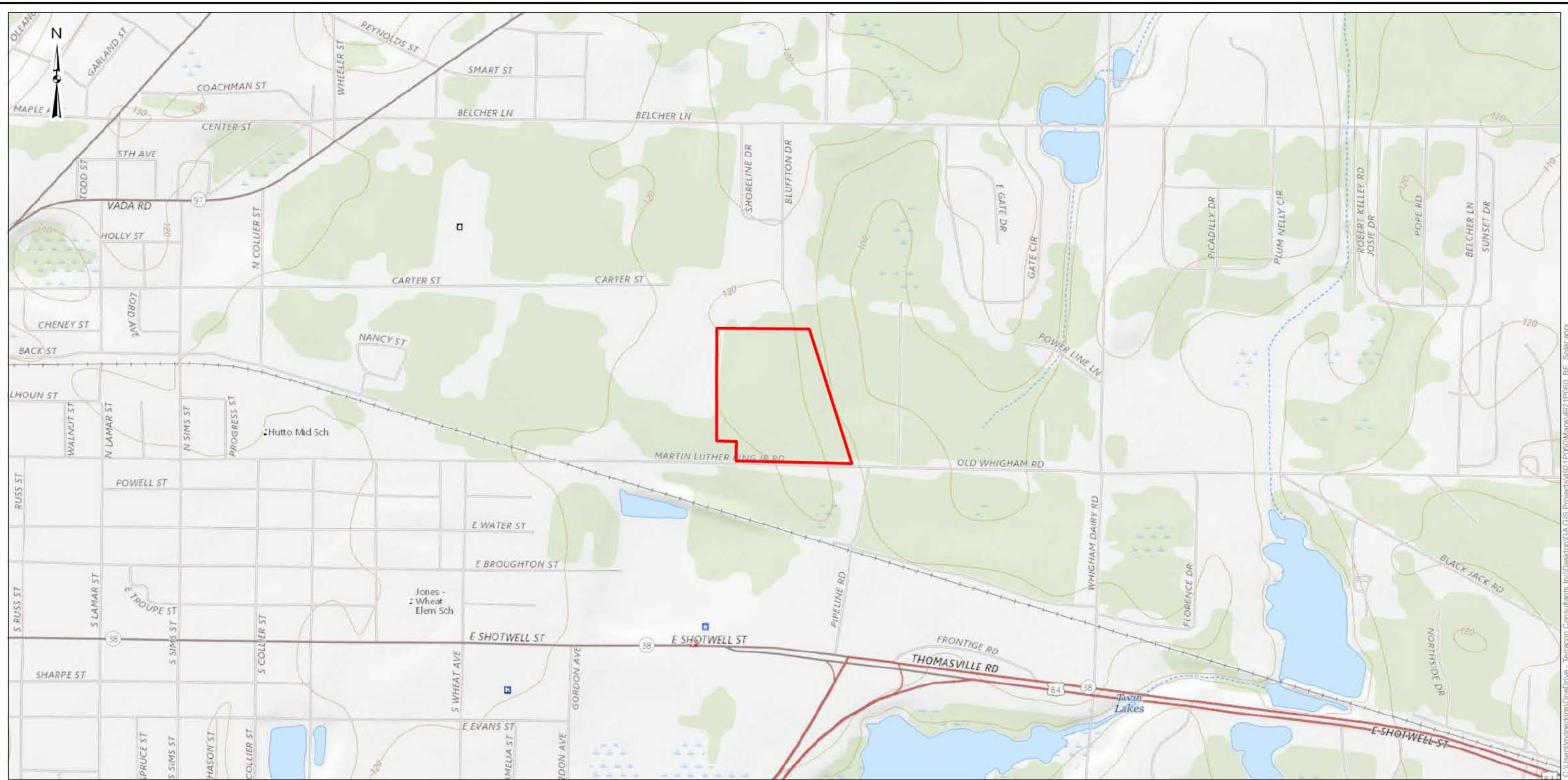
SECTION III: DATA SOURCES.

A. SUPPORTING DATA. Data reviewed for JD (check all that apply - checked items shall be included in case file and, where checked and requested, appropriately reference sources below):

- Maps, plans, plots or plat submitted by or on behalf of the applicant/consultant: [Click here to enter text.](#)
 Data sheets prepared/submitted by or on behalf of the applicant/consultant.
 Office concurs with data sheets/delineation report.
 Office does not concur with data sheets/delineation report.
 Data sheets prepared by the Corps: [Click here to enter text.](#)
 U.S. Geological Survey Hydrologic Atlas: [Click here to enter text.](#)
 USGS NHD data.
 USGS 8 and 12 digit HUC maps.
 U.S. Geological Survey map(s). Cite scale & quad name: Exhibit 1, USGS Topographic Vicinity Map, Bainbridge, GA USGS 7.5' Topographic Quadrangle
 USDA Natural Resources Conservation Service Soil Survey. Citation: Exhibit 4, SSU
 National wetlands inventory map(s). Cite name: Exhibit 3, National Wetlands Inventory Map
 State/Local wetland inventory map(s): [Click here to enter text.](#)
 FEMA/FIRM maps: [Click here to enter text.](#)
 100-year Floodplain Elevation is: Exhibit 5, FEMA Flood Hazard Zone Map (National Geodetic Vertical Datum of 1929)
 Photographs: Aerial (Name & Date):
 or Other (Name & Date):
 Previous determination(s). File no. and date of response letter: [Click here to enter text.](#)
 Applicable/supporting case law: [Click here to enter text.](#)
 Applicable/supporting scientific literature: [Click here to enter text.](#)
 Other information (please specify): [Click here to enter text.](#)

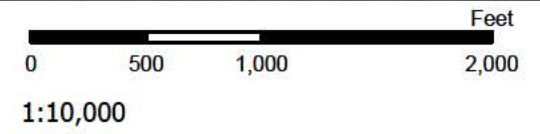
B. REQUIRED ADDITIONAL COMMENTS TO SUPPORT JD. EXPLAIN RATIONALE FOR DETERMINATION THAT THE REVIEW AREA ONLY INCLUDES DRY LAND: Based on the Corps review of all available information it has been determine that the review area contains no waters.

¹ This form is for use only in recording approved JDs involving dry land. It extracts the relevant elements of the longer approved JD form in use since 2007 for aquatic areas and adds no new fields.



Project Site Boundary

DATA SOURCES:
ESRI WMS - World Aerial Imagery, OpenStreetMap



Bainbridge, GA USGS 7.5' Topographic Quadrangle

Project No.:
4921P060
Date:
May 2021
Drawn By:
MDP
Reviewed By:
JWB

Terracon
2105 Newpoint Place, Suite 600 Lawrenceville, GA 30043
PH: (770) 623-0755 terracon.com

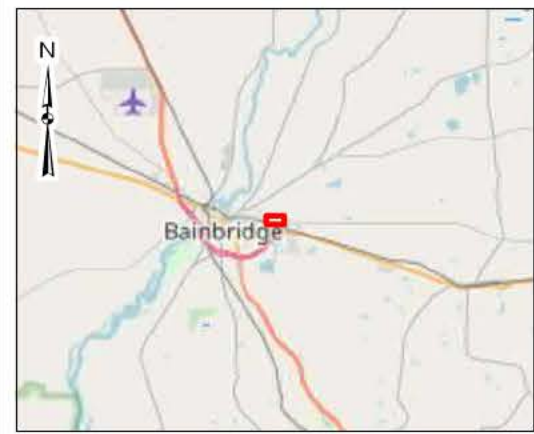
USGS Topographic Vicinity Map

Samsung Solar
BE Solar Site
Old Whigham Road
Bainbridge, Decatur County, Georgia

Exhibit

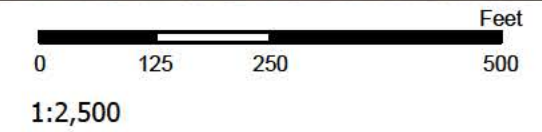
1

C:\Users\jacob\OneDrive\Terracon\Projects\Bainbridge\GIS\Projects\MDP\1000\Map\10010060_BE_Solar.aprx



Project Site Boundary

DATA SOURCES:
ESRI WMS - World Aerial Imagery, OpenStreetMap



Project No.:
4921P060
Date:
May 2021
Drawn By:
MDP
Reviewed By:
JWB

Terracon

2105 Newpoint Place, Suite 600 Lawrenceville, GA 30043
PH: (770) 623-0755 terracon.com

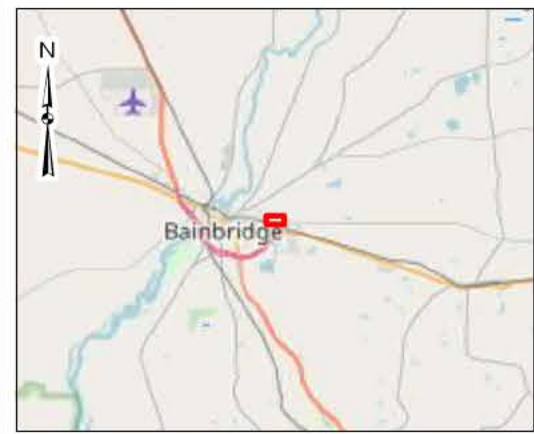
Aerial Image (2020)

Samsung Solar
BE Solar Site
Old Whigham Road
Bainbridge, Decatur County, Georgia

Exhibit

2

C:\Users\jpedra\OneDrive - Terracon\Consultant\ArcDesktop\GIA GIS Project\Bainbridge\Bainbridge\Map\Map\001\0060_BE_Solar.aprx



- Project Site Boundary
- Wetland Type**
- Freshwater Forested/Shrub Wetland
- Freshwater Pond

DATA SOURCES:
ESRI WMS - World Aerial Imagery, OpenStreetMap



Project No.:
4921P060
Date:
May 2021
Drawn By:
MDP
Reviewed By:
JWB

Terracon
2105 Newpoint Place, Suite 600 Lawrenceville, GA 30043
PH: (770) 623-0755 terracon.com

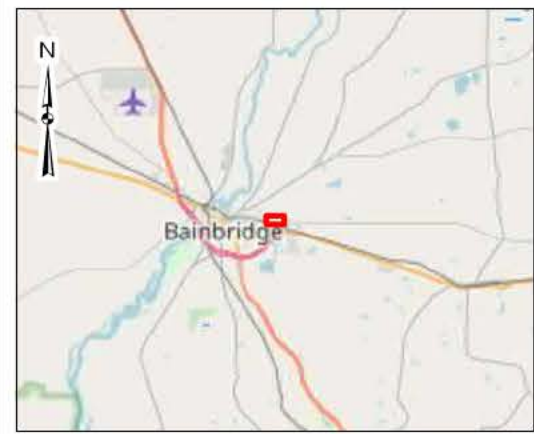
National Wetlands Inventory Map

Samsung Solar
BE Solar Site
Old Whigham Road
Bainbridge, Decatur County, Georgia

Exhibit

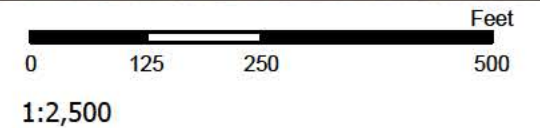
3

C:\Users\jpedra\OneDrive\Documents\Projects\GIS\Bainbridge\Map\MapV0012020A_BE_Solar.aprx



- Project Site Boundary
- Soil Map Unit**
- BIB-Blanton loamy sand, 0 to 5 percent slopes
- BoB-Bonneau loamy sand, 0 to 5 percent slopes

DATA SOURCES:
ESRI WMS - World Aerial Imagery, OpenStreetMap



Project No.:
4921P060
Date:
May 2021
Drawn By:
MDP
Reviewed By:
JWB

Terracon
2105 Newpoint Place, Suite 600 Lawrenceville, GA 30043
PH: (770) 623-0755 terracon.com

SSURGO Soils Map

Samsung Solar
BE Solar Site
Old Whigham Road
Bainbridge, Decatur County, Georgia

Exhibit

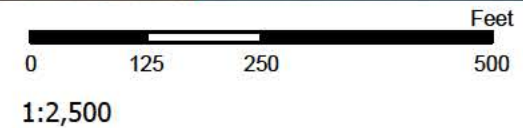
4

C:\Users\jpedra\OneDrive\Documents\Terracon\Consulting\ArcDesktop\GIA_CGIS\Projects\4921P060\Map\4921P060_BE_Solar.aprx



- Project Site Boundary
 - FIRM Panels
- ### Flood Hazard Zones
- 1% Annual Chance Flood Hazard
 - Regulatory Floodway
 - Special Floodway
 - Area of Undetermined Flood Hazard
 - 0.2% Annual Chance Flood Hazard
 - Future Conditions 1% Annual Chance Flood Hazard
 - Area with Reduced Risk Due to Levee

DATA SOURCES:
ESRI WMS - World Aerial Imagery, OpenStreetMap



Project No.:
4921P060
Date:
May 2021
Drawn By:
MDP
Reviewed By:
JWB

Terracon
2105 Newpoint Place, Suite 600 Lawrenceville, GA 30043
PH: (770) 623-0755 terracon.com

FEMA Flood Hazard Zone Map

Samsung Solar
BE Solar Site
Old Whigham Road
Bainbridge, Decatur County, Georgia

Exhibit

5

C:\Users\jwpedra\OneDrive - Terracon\Consultants\LocalDesktop\GA GIS Projects\102-1-2020\Mapa\102-1-2020_BE_Solar.aprx