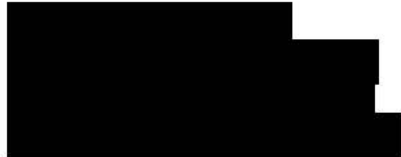




**DEPARTMENT OF THE ARMY**  
U.S. ARMY CORPS OF ENGINEERS, SAVANNAH DISTRICT  
100 W. OGLETHORPE AVENUE  
SAVANNAH, GEORGIA 31401-3604

January 26, 2024

Regulatory Division  
SAS-2023-00932



Dear [REDACTED]:

I refer to a letter dated November 14, 2023, submitted on your behalf by [REDACTED], requesting an approved Jurisdictional Determination (AJD) for a 24.50-acre site located approximately 0.6 miles northeast of the intersection of Fort Howard Road and Highway 21 in Rincon, Effingham County, Georgia (Latitude: 32.2803, Longitude: -81.2284). This project has been assigned number SAS-2023-00932 and it is important that you refer to this number in all communication concerning this matter.

We have completed an AJD for this site. Any wetlands on-site were delineated in accordance with criteria contained in the 1987 "Corps of Engineers Wetland Delineation Manual," as amended by the most recent regional supplements to the manual. I have enclosed an "AJD Memorandum for Record," which details whether aquatic resources present on the site are subject to the jurisdiction of the U.S. Army Corps of Engineers and how the Corps determined jurisdiction.

"Wetland A" as depicted on the enclosed exhibit entitled, "Gate Station Expansion Tract Effingham County, Georgia Aquatic Resource Delineation GPS Exhibit", dated December 15, 2023, is a water of the United States and is therefore within the jurisdiction of Section 404 of the Clean Water Act (33 United States Code § 1344). The placement of dredged or fill material into Waters of the United States, including mechanized land clearing of jurisdictional wetlands would require prior Department of the Army authorization pursuant to Section 404.

"Wetland B" as depicted on the enclosed exhibit entitled, "Gate Station Expansion Tract Effingham County, Georgia Aquatic Resource Delineation GPS Exhibit", dated December 15, 2023, is not a water of the United States and is therefore not within the jurisdiction of Section 404 of the Clean Water Act. The placement of dredged or fill material into non-jurisdictional waters would not require prior Department of the Army authorization pursuant to Section 404.



This approved JD will remain valid for a period of 5-years unless new information warrants revision prior to that date. You may request an administrative appeal for any approved JD under the Corps regulations at 33 Code of Federal Regulations (CFR) Part 331. Enclosed you will find a Notification of Administrative Appeal Options and Process and Request for Appeal form.

The delineation included herein has been conducted to identify the location and extent of the aquatic resource boundaries and/or the jurisdictional status of aquatic resources for purposes of the Clean Water Act for the particular site identified in this request. This delineation and/or jurisdictional determination may not be valid for the Wetland Conservation Provisions of the Food Security Act of 1985, as amended. If you or your tenant are USDA program participants, or anticipate participation in USDA programs, you should discuss the applicability of a certified wetland determination with the local USDA service center, prior to starting work.

If you intend to sell property that is part of a project that requires Department of the Army Authorization, it may be subject to the Interstate Land Sales Full Disclosure Act. The Property Report required by Housing and Urban Development Regulation must state whether, or not a permit for the development has been applied for, issued or denied by the U.S. Army Corps of Engineers (Part 320.3(h) of Title 33 of the CFR).

This communication does not convey any property rights, either in real estate or material, or any exclusive privileges. It does not authorize any injury to property, invasion of rights, or any infringement of federal, state or local laws, or regulations. It does not obviate your requirement to obtain state or local assent required by law for the development of this property. If the information you have submitted, and on which the U.S. Army Corps of Engineers has based its determination is later found to be in error, this decision may be revoked.

Thank you in advance for completing our on-line Customer Survey Form located at <https://regulatory.ops.usace.army.mil/customer-service-survey/>. We value your comments and appreciate your taking the time to complete a survey each time you have interaction with our office.

If you have any questions, please contact [REDACTED]  
[REDACTED]  
[REDACTED]

- 3 -

Sincerely,

[REDACTED]

[REDACTED]

Copy Furnished: [REDACTED]

Enclosures



Point	Y	X	Point	Y	X	Point	Y	X	Point	Y	X
1	32.280519	-81.226316	26	32.27926	-81.226413	42	32.279024	-81.229459	59	32.280723	-81.228246
10	32.280186	-81.226741	27	32.282065	-81.228097	43	32.281505	-81.227406	6	32.280376	-81.226359
11	32.28135	-81.226812	28	32.279169	-81.228658	44	32.281365	-81.227383	60	32.279631	-81.228794
12	32.280107	-81.226859	29	32.281978	-81.227953	45	32.279129	-81.22955	61	32.280618	-81.228379
13	32.280034	-81.226977	30	32.281963	-81.227299	46	32.281151	-81.227445	62	32.280004	-81.228749
14	32.279666	-81.227104	31	32.282021	-81.227802	47	32.279182	-81.22964	63	32.280418	-81.228411
15	32.281205	-81.226688	32	32.282108	-81.22765	48	32.281023	-81.227507	64	32.280253	-81.228529
16	32.279629	-81.227276	33	32.279218	-81.228679	49	32.279226	-81.229667	65	32.280966	-81.229694
17	32.279756	-81.227426	34	32.282114	-81.227516	5	32.281563	-81.227142	66	32.281312	-81.229078
18	32.279549	-81.227518	35	32.279188	-81.229045	50	32.279253	-81.229506	67	32.280898	-81.229558
19	32.281004	-81.226615	36	32.282045	-81.227447	51	32.28096	-81.227649	68	32.281001	-81.229403
2	32.282024	-81.22724	37	32.279122	-81.229182	52	32.28088	-81.227862	69	32.281172	-81.229042
20	32.279507	-81.227648	38	32.281955	-81.227394	53	32.279231	-81.229377	7	32.280363	-81.228484
21	32.280914	-81.226504	39	32.279001	-81.229275	54	32.280657	-81.228013	70	32.281061	-81.229148
22	32.279453	-81.22779	40	32.278966	-81.22936	55	32.279371	-81.229194	8	32.280277	-81.22658
23	32.279491	-81.227907	41	32.281738	-81.227244	56	32.279538	-81.228078	9	32.281479	-81.228895
24	32.279364	-81.22801	42	32.281639	-81.227432	57	32.279669	-81.228867			
25	32.279246	-81.228182	43	32.281698	-81.2274	58	32.280833	-81.22812			

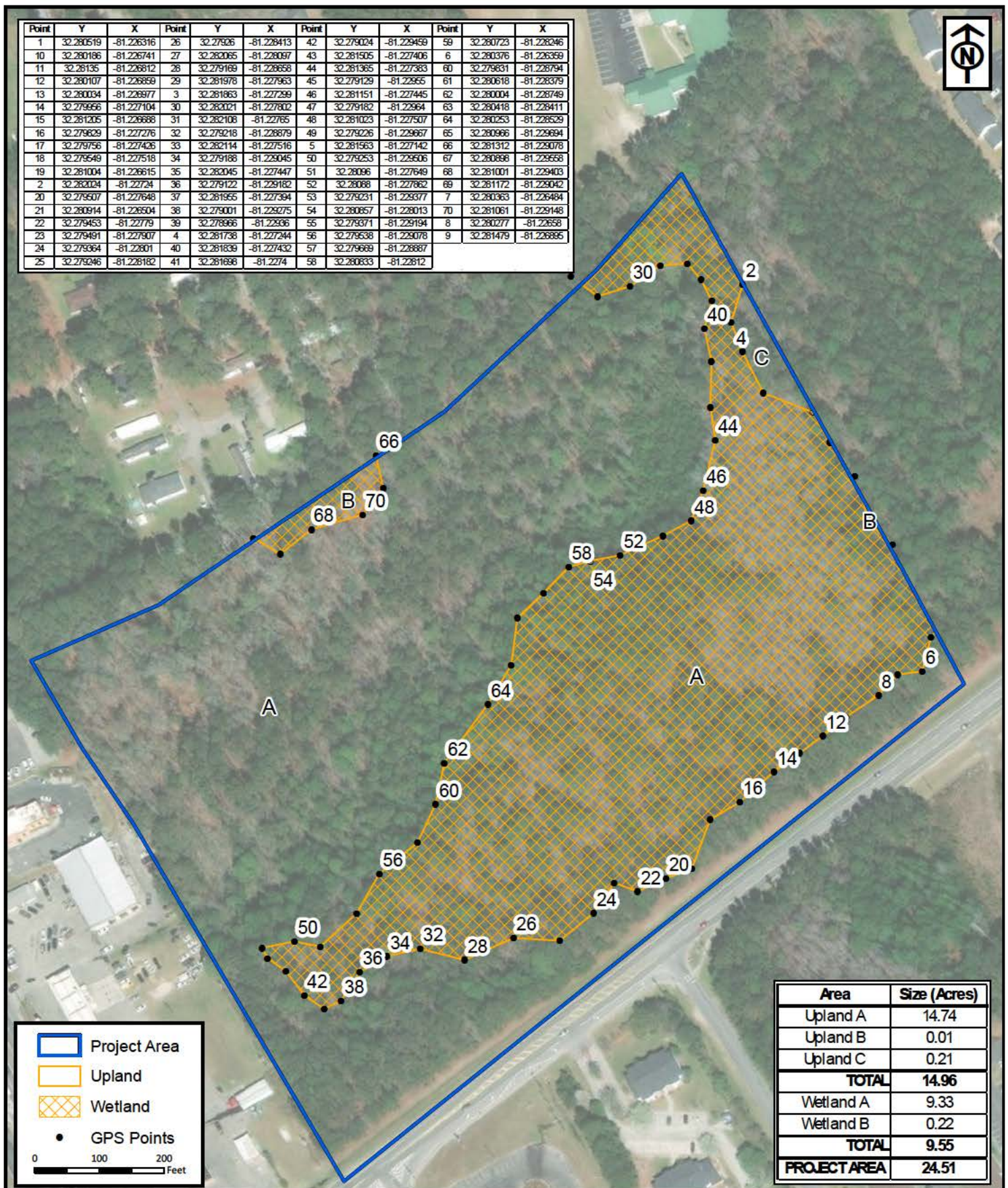


Figure No.: 1  
Prepared By: HP  
Sketch Date: 12/15/2023  
Map Scale: 1 inch = 200 feet

**Gate Station  
Expansion Tract**  
Effingham County, Georgia

**Aquatic Resource  
Delineation GPS Exhibit**  
Prepared For: [REDACTED]