



DEPARTMENT OF THE ARMY
U.S. ARMY CORPS OF ENGINEERS, SAVANNAH DISTRICT
100 W. OGLETHORPE AVENUE
SAVANNAH, GEORGIA 31401-3604

February 7, 2024

Regulatory Division
SAS-2023-00561



Dear [REDACTED]

I refer to a letter dated December 27, 2023, [submitted on your behalf by] [REDACTED], requesting an AJD for an approximately 4-acre site located south east of the intersection of Pine Barren Road and Bloomingdale Road in Bloomingdale, Chatham County, Georgia (Latitude 32.113199, Longitude -81.313125). This project has been assigned number SAS-SAS-2023-00561 and it is important that you refer to this number in all communication concerning this matter.

We have completed AJD for this site. Any wetlands on-site were delineated in accordance with criteria contained in the 1987 "Corps of Engineers Wetland Delineation Manual," as amended by the most recent regional supplements to the manual. I have enclosed an "AJD Memorandum for Record," which details whether aquatic resources present on the site are subject to the jurisdiction of the U.S. Army Corps of Engineers and how the Corps determined jurisdiction.

"Wetland 2 and 4 and Pond 1" as depicted on the enclosed exhibit entitled, "Denoyers Tract", dated 2/5/2024, are not waters of the United States and are therefore not within the jurisdiction of Section 404 of the Clean Water Act (33 United States Code § 1344). The placement of dredged or fill material into non-jurisdictional waters would not require prior Department of the Army authorization pursuant to Section 404

This approved JD will remain valid for a period of 5-years unless new information warrants revision prior to that date. You may request an administrative appeal for any approved JD under the Corps regulations at 33 Code of Federal Regulations (CFR) Part 331. Enclosed you will find a Notification of Administrative Appeal Options and Process and Request for Appeal form.

The delineation included herein has been conducted to identify the location and extent of the aquatic resource boundaries and/or the jurisdictional status of aquatic resources for purposes of the Clean Water Act for the particular site identified in this

request. This delineation and/or jurisdictional determination may not be valid for the Wetland Conservation Provisions of the Food Security Act of 1985, as amended. If you or your tenant are USDA program participants, or anticipate participation in USDA programs, you should discuss the applicability of a certified wetland determination with the local USDA service center, prior to starting work.

If you intend to sell property that is part of a project that requires Department of the Army Authorization, it may be subject to the Interstate Land Sales Full Disclosure Act. The Property Report required by Housing and Urban Development Regulation must state whether, or not a permit for the development has been applied for, issued or denied by the U.S. Army Corps of Engineers (Part 320.3(h) of Title 33 of the CFR).

This communication does not convey any property rights, either in real estate or material, or any exclusive privileges. It does not authorize any injury to property, invasion of rights, or any infringement of federal, state or local laws, or regulations. It does not obviate your requirement to obtain state or local assent required by law for the development of this property. If the information you have submitted, and on which the U.S. Army Corps of Engineers has based its determination is later found to be in error, this decision may be revoked.

Thank you in advance for completing our on-line Customer Survey Form located at <https://regulatory.ops.usace.army.mil/customer-service-survey/>. We value your comments and appreciate your taking the time to complete a survey each time you have interaction with our office.

If you have any questions, please contact me by phone at [REDACTED] or by email at [REDACTED].

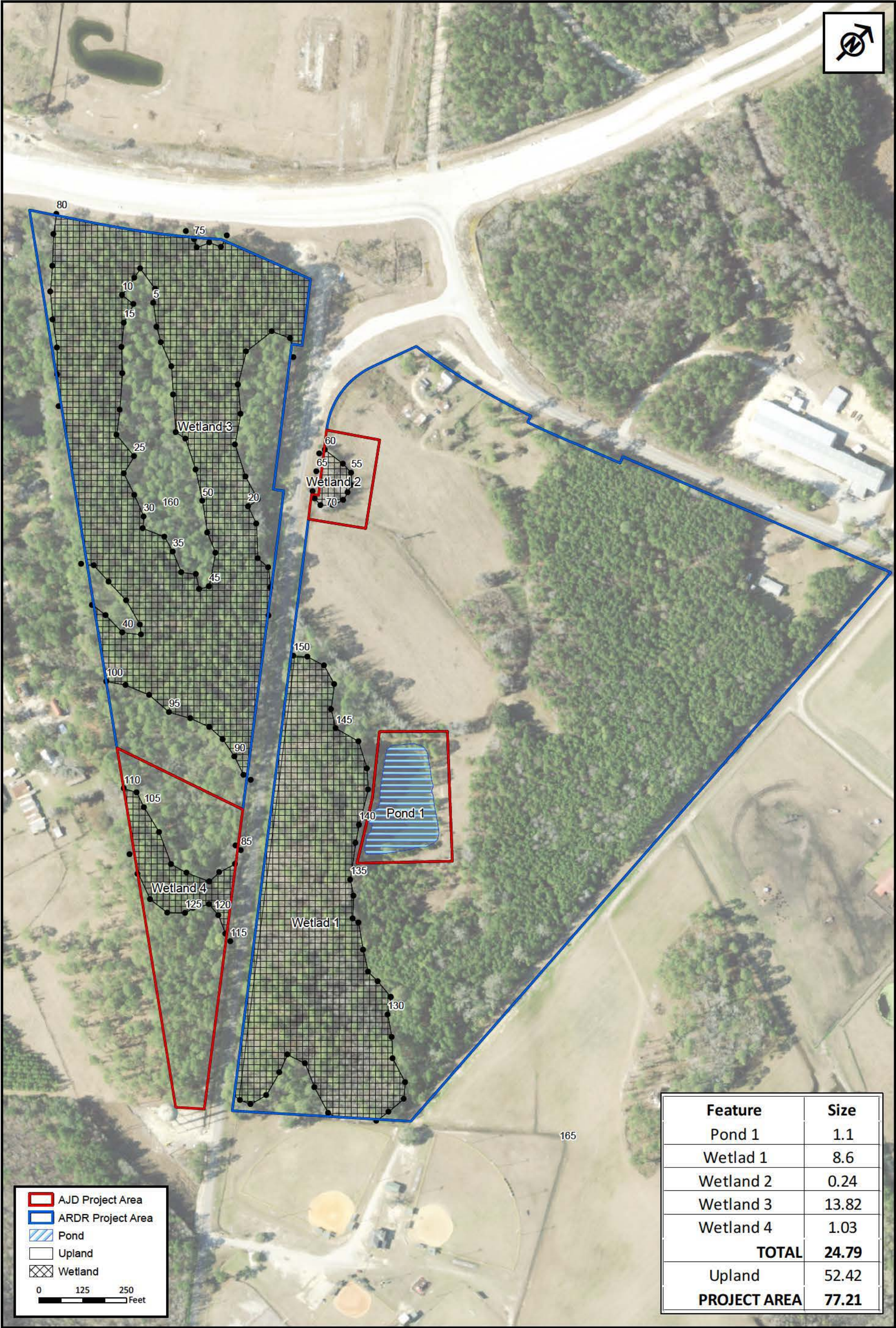
Sincerely,

[REDACTED]

Project Manager, Coastal Branch

Copy Furnished: [REDACTED]

Enclosures



Feature	Size
Pond 1	1.1
Wetlad 1	8.6
Wetland 2	0.24
Wetland 3	13.82
Wetland 4	1.03
TOTAL	24.79
Upland	52.42
PROJECT AREA	77.21

AJD Project Area

ARDR Project Area

Pond

Upland

Wetland

0125250

Feet

RLC Project No.: 21-409

Figure No.: 8

Prepared By: [Redacted]

Sketch Date: 2/5/2024

Map Scale : 1 inch = 250 feet

Desnoyers Tract

Chatham County, Georgia

GPS Wetland Exhibit

Prepared For: Chris Hayes

Point	Y	X	Point	Y	X	Point	Y	X
1	32.114849	-81.315544	51	32.112587	-81.315504	101	32.111347	-81.31306
2	32.114939	-81.315689	52	32.112525	-81.315596	102	32.11041	-81.311079
3	32.114264	-81.316638	53	32.113684	-81.315457	103	32.11146	-81.313346
4	32.114876	-81.315855	54	32.11138	-81.315724	104	32.110445	-81.310983
5	32.11438	-81.316816	55	32.114526	-81.314416	105	32.111514	-81.313607
6	32.114622	-81.31589	56	32.113782	-81.315829	106	32.110582	-81.310941
7	32.11447	-81.316894	57	32.11453	-81.314528	107	32.111555	-81.313751
8	32.114499	-81.317124	58	32.113979	-81.316091	108	32.110782	-81.311
9	32.114417	-81.317102	59	32.114126	-81.316286	109	32.110925	-81.311064
10	32.114253	-81.317072	60	32.114508	-81.314739	110	32.111509	-81.31386
11	32.114392	-81.315729	61	32.113282	-81.316766	111	32.110975	-81.310891
12	32.114392	-81.315729	62	32.114202	-81.31651	112	32.111171	-81.313396
13	32.114265	-81.316938	63	32.114457	-81.31475	113	32.110891	-81.310674
14	32.114242	-81.315523	64	32.113452	-81.316981	114	32.111106	-81.313218
15	32.114108	-81.316879	65	32.11434	-81.314653	115	32.111243	-81.312172
16	32.114042	-81.315362	66	32.113599	-81.317158	116	32.110824	-81.310419
17	32.113959	-81.316737	67	32.114208	-81.31455	117	32.111258	-81.312255
18	32.11392	-81.315084	68	32.113732	-81.317367	118	32.111322	-81.312417
19	32.113818	-81.316562	69	32.11418	-81.314489	119	32.111036	-81.312971
20	32.113768	-81.314873	70	32.114174	-81.314405	120	32.111331	-81.312552
21	32.113599	-81.316341	71	32.113875	-81.317563	121	32.111046	-81.31005
22	32.113861	-81.314857	72	32.114962	-81.317067	122	32.111222	-81.312634
23	32.113441	-81.316199	73	32.114029	-81.317718	123	32.111053	-81.31277
24	32.113717	-81.314708	74	32.114241	-81.314331	124	32.111165	-81.31003
25	32.11342	-81.315948	75	32.114961	-81.316959	125	32.111151	-81.312651
26	32.113531	-81.314474	76	32.114329	-81.314291	126	32.111318	-81.310013
27	32.113265	-81.315903	77	32.114216	-81.317916	127	32.11142	-81.31011
28	32.113538	-81.314345	78	32.114931	-81.316889	128	32.111485	-81.310349
29	32.113204	-81.315695	79	32.114396	-81.314311	129	32.11116	-81.310493
30	32.113135	-81.315494	80	32.114343	-81.318029	130	32.111702	-81.310664
31	32.113437	-81.314202	81	32.115027	-81.316839	131	32.112176	-81.311658
32	32.113066	-81.315423	82	32.114456	-81.314337	132	32.111816	-81.310757
33	32.113136	-81.315227	83	32.115067	-81.316733	133	32.111816	-81.310757
34	32.113272	-81.314032	84	32.115163	-81.316771	134	32.112045	-81.311517
35	32.1131	-81.315074	85	32.111809	-81.312694	135	32.112249	-81.311784
36	32.113031	-81.314884	86	32.111806	-81.312757	136	32.112054	-81.311452
37	32.113102	-81.314778	87	32.112256	-81.313083	137	32.111832	-81.310946
38	32.112358	-81.315259	88	32.112243	-81.313163	138	32.112483	-81.311987
39	32.112375	-81.315102	89	32.111701	-81.312643	139	32.111928	-81.311244
40	32.112372	-81.314882	90	32.112297	-81.313343	140	32.112602	-81.312082
41	32.113037	-81.314662	91	32.112328	-81.313531	141	32.111833	-81.31107
42	32.112463	-81.314746	92	32.112323	-81.313699	142	32.112849	-81.312253
43	32.112511	-81.314817	93	32.112267	-81.313881	143	32.112961	-81.312396
44	32.113106	-81.314611	94	32.111567	-81.312694	144	32.113065	-81.312627
45	32.113106	-81.314611	95	32.112184	-81.314059	145	32.113012	-81.312862
46	32.11257	-81.315066	96	32.111461	-81.312696	146	32.113095	-81.313015
47	32.113329	-81.314786	97	32.112171	-81.314301	147	32.113251	-81.313157
48	32.113396	-81.314971	98	32.112095	-81.314519	148	32.1133	-81.313346
49	32.112579	-81.315301	99	32.111384	-81.312903	149	32.113256	-81.313512
50	32.113546	-81.31521	100	32.112009	-81.314671	150	32.113184	-81.313608

RLC Project No.:	21-409
Figure No.:	9
Prepared By:	BS
Sketch Date:	12/27/2023
Map Scale :	1 inch = 250 feet

Desnoyers Tract
Chatham County, Georgia

GPS Wetland Exhibit