



DEPARTMENT OF THE ARMY
U.S. ARMY CORPS OF ENGINEERS, SAVANNAH DISTRICT
100 W. OGLETHORPE AVENUE
SAVANNAH, GEORGIA 31401-3604

February 21, 2024

Regulatory Division
SAS-2023-00510



Dear [REDACTED]:

I refer to an email dated November 27, 2023, submitted on your behalf by [REDACTED], requesting an Approved Jurisdictional Determination (AJD) for a 278.73-acre site located at north of the intersection of Haddock Road and St. Mary's Road Kingsland, Camden County Georgia, and Latitude 30.768624, Longitude -81.648245. This project has been assigned number SAS-2023-00510 and it is important that you refer to this number in all communication concerning this matter.

We have completed an AJD for this site. Any wetlands on-site were delineated in accordance with criteria contained in the 1987 "Corps of Engineers Wetland Delineation Manual," as amended by the most recent regional supplements to the manual. I have enclosed an "AJD Memorandum for Record," which details whether aquatic resources present on the site are subject to the jurisdiction of the U.S. Army Corps of Engineers and how the Corps determined jurisdiction.

Wetlands E, G, J, K, and L as depicted on the enclosed exhibit entitled, "Aquatic Resource Delineation Exhibit", dated February 7, 2024, are waters of the United States and are therefore within the jurisdiction of Section 404 of the Clean Water Act (33 United States Code § 1344). The placement of dredged or fill material into Waters of the United States, including mechanized land clearing of jurisdictional wetlands would require prior Department of the Army authorization pursuant to Section 404. The above referenced exhibit also identifies the delineation limits of all other aquatic resources within the review area.

Wetlands A, B, C, D, F, H, I and M as depicted on the enclosed exhibit entitled, "Aquatic Resource Delineation Exhibit, dated February 7, 2024, are not waters of the United States and are therefore not within the jurisdiction of Section 404 of the Clean Water Act (33 United States Code § 1344). The placement of dredged or fill material

into non-jurisdictional waters would not require prior Department of the Army authorization pursuant to Section 404.

This approved JD will remain valid for a period of 5-years unless new information warrants revision prior to that date. You may request an administrative appeal for any approved JD under the Corps regulations at 33 Code of Federal Regulations (CFR) Part 331. Enclosed you will find a Notification of Administrative Appeal Options and Process and Request for Appeal form.

The delineation included herein has been conducted to identify the location and extent of the aquatic resource boundaries and/or the jurisdictional status of aquatic resources for purposes of the Clean Water Act for the particular site identified in this request. This delineation and/or jurisdictional determination may not be valid for the Wetland Conservation Provisions of the Food Security Act of 1985, as amended. If you or your tenant are USDA program participants, or anticipate participation in USDA programs, you should discuss the applicability of a certified wetland determination with the local USDA service center, prior to starting work.

If you intend to sell property that is part of a project that requires Department of the Army Authorization, it may be subject to the Interstate Land Sales Full Disclosure Act. The Property Report required by Housing and Urban Development Regulation must state whether, or not a permit for the development has been applied for, issued or denied by the U.S. Army Corps of Engineers (Part 320.3(h) of Title 33 of the CFR).

This communication does not convey any property rights, either in real estate or material, or any exclusive privileges. It does not authorize any injury to property, invasion of rights, or any infringement of federal, state or local laws, or regulations. It does not obviate your requirement to obtain state or local assent required by law for the development of this property. If the information you have submitted, and on which the U.S. Army Corps of Engineers has based its determination is later found to be in error, this decision may be revoked.

Thank you in advance for completing our on-line Customer Survey Form located at <https://regulatory.ops.usace.army.mil/customer-service-survey/>. We value your comments and appreciate your taking the time to complete a survey each time you have interaction with our office.

If you have any questions, please contact me by phone at [REDACTED] or by email at [REDACTED]

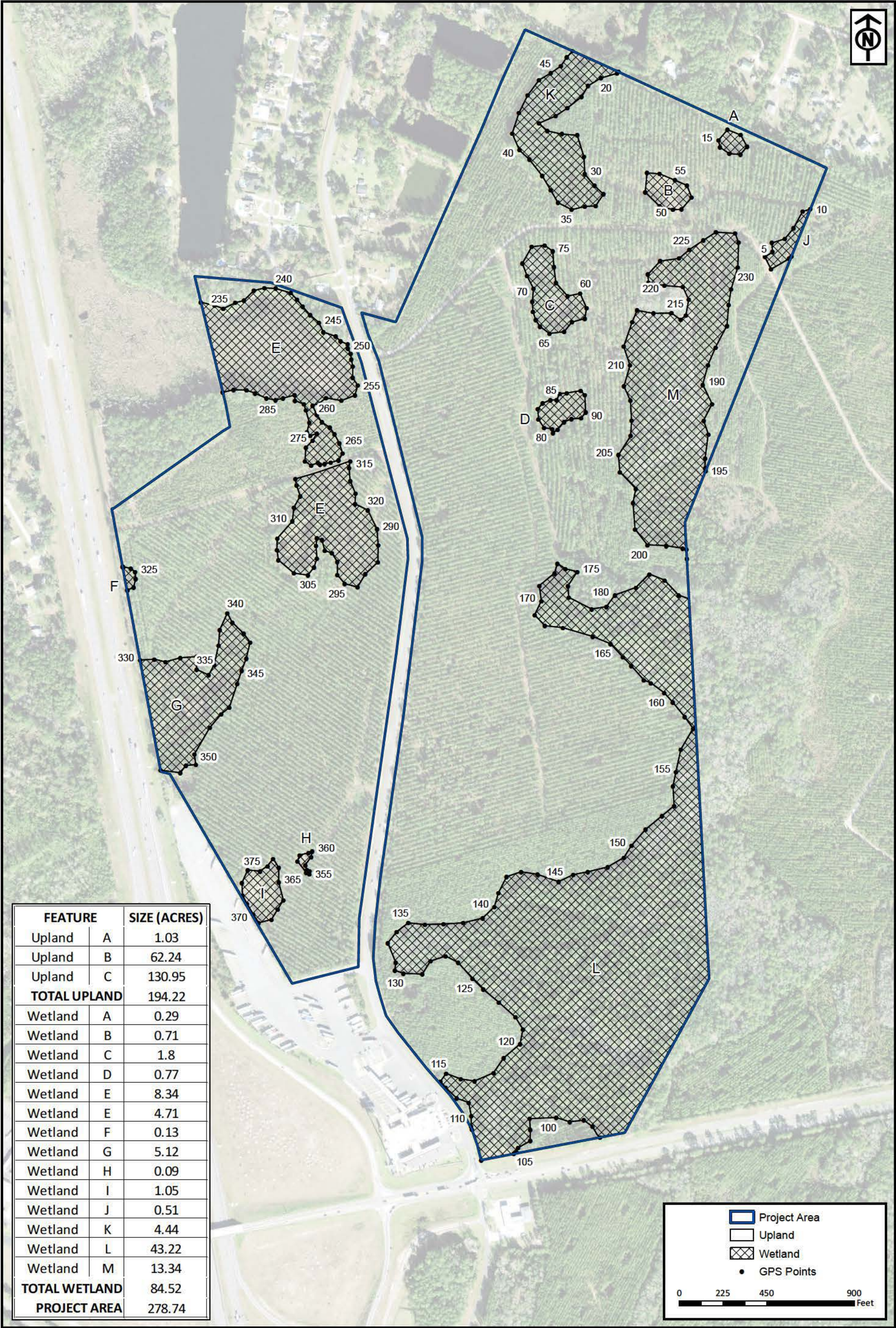
Sincerely,

[REDACTED]

Copy Furnished:

[REDACTED]

Enclosures



RLC Project No.: 23-066
Figure No.: 8
Prepared By: BS
Sketch Date: 2/7/2024
Map Scale : 1 inch = 450 feet

GA Gateway Tract
Camden County, Georgia

**Aquatic Resource
Delineation Exhibit**
Prepared For: [REDACTED]

Point	Y	X	Point	Y	X	Point	Y	X	Point	Y	X	Point	Y	X
1	30.773013	-81.64279	76	30.77288	-81.6467	152	30.76512	-81.645	230	30.77286	-81.6437	305	30.76854	-81.6507
2	30.772981	-81.642827	77	30.77058	-81.6466	153	30.76526	-81.6448	231	30.77255	-81.6438	306	30.76857	-81.651
3	30.772832	-81.643125	78	30.77053	-81.6467	154	30.76554	-81.6448	232	30.77113	-81.6521	307	30.76876	-81.6512
4	30.773007	-81.643225	79	30.77059	-81.6467	155	30.76574	-81.6447	233	30.7724	-81.6525	308	30.7689	-81.6512
5	30.773077	-81.6431	80	30.77061	-81.6469	156	30.76605	-81.6446	234	30.77236	-81.6522	309	30.76906	-81.6512
6	30.773203	-81.64311	81	30.77073	-81.6469	157	30.76635	-81.6444	235	30.77231	-81.6521	310	30.7693	-81.651
7	30.773259	-81.642898	82	30.77087	-81.647	158	30.76652	-81.6446	236	30.77239	-81.6519	311	30.7695	-81.651
8	30.77341	-81.642756	83	30.77096	-81.6469	159	30.76672	-81.6448	237	30.77243	-81.6518	312	30.76966	-81.6508
9	30.773647	-81.642604	84	30.771	-81.6467	160	30.76686	-81.6449	238	30.77257	-81.6516	313	30.76981	-81.6509
10	30.77368	-81.642477	85	30.771	-81.6466	161	30.767	-81.6451	239	30.7726	-81.6514	314	30.7699	-81.6509
11	30.774565	-81.643508	86	30.77109	-81.6466	162	30.76704	-81.6452	240	30.77259	-81.6512	315	30.77015	-81.65
12	30.774455	-81.643618	87	30.7711	-81.6465	163	30.76724	-81.6454	241	30.77253	-81.651	316	30.77006	-81.6501
13	30.774467	-81.643802	88	30.77113	-81.6463	164	30.76737	-81.6456	242	30.77243	-81.6509	317	30.76987	-81.65
14	30.774558	-81.643952	89	30.77107	-81.6462	165	30.76755	-81.6458	243	30.77234	-81.6508	318	30.76969	-81.6499
15	30.77466	-81.643976	90	30.77082	-81.6462	166	30.76766	-81.6461	244	30.77221	-81.6507	319	30.76954	-81.65
16	30.774805	-81.643826	91	30.77074	-81.6462	167	30.76778	-81.6466	245	30.77211	-81.6505	320	30.76946	-81.6497
17	30.77473	-81.64361	92	30.77073	-81.6464	168	30.76781	-81.6469	246	30.77198	-81.6505	321	30.76834	-81.6537
18	30.775633	-81.645608	93	30.77069	-81.6465	169	30.76797	-81.647	247	30.77191	-81.6503	322	30.76867	-81.6538
19	30.77561	-81.645632	94	30.76875	-81.6445	170	30.76816	-81.6469	248	30.77184	-81.6502	323	30.76867	-81.6538
20	30.775544	-81.645895	96	30.76058	-81.646	171	30.76838	-81.6469	249	30.7718	-81.6501	324	30.76865	-81.6536
21	30.775433	-81.646107	97	30.76073	-81.6461	172	30.76855	-81.6467	250	30.77174	-81.6501	325	30.7686	-81.6536
22	30.775282	-81.646214	98	30.76082	-81.6463	173	30.76869	-81.6466	251	30.77167	-81.65	326	30.7685	-81.6535
23	30.775121	-81.646448	99	30.7608	-81.6465	174	30.76861	-81.6465	252	30.77159	-81.65	327	30.76838	-81.6536
24	30.775014	-81.64664	100	30.76086	-81.6467	175	30.76857	-81.6463	253	30.77149	-81.65	328	30.76834	-81.6537
25	30.774911	-81.646914	101	30.76085	-81.6471	176	30.76837	-81.6465	254	30.77132	-81.65	329	30.7658	-81.6532
26	30.774801	-81.646781	102	30.76069	-81.6471	177	30.76821	-81.6465	255	30.77122	-81.6499	330	30.76735	-81.6535
27	30.774758	-81.646542	103	30.76053	-81.6471	178	30.76804	-81.6461	256	30.77108	-81.6499	331	30.76736	-81.6532
28	30.77474	-81.646287	104	30.76044	-81.6473	179	30.76808	-81.6458	257	30.771	-81.6502	332	30.76732	-81.6531
29	30.774433	-81.646179	105	30.76038	-81.6474	180	30.76824	-81.6457	258	30.77104	-81.6504	333	30.76738	-81.6528
30	30.774189	-81.646167	106	30.76036	-81.6474	181	30.76835	-81.6454	259	30.77096	-81.6505	334	30.7674	-81.6526
31	30.774022	-81.646008	107	30.76026	-81.6479	182	30.76853	-81.6451	260	30.77094	-81.6506	335	30.76721	-81.6526
32	30.773904	-81.645861	108	30.7607	-81.6481	186	30.77233	-81.6438	261	30.7708	-81.6506	336	30.76714	-81.6524
33	30.773737	-81.645991	109	30.76074	-81.6481	187	30.77204	-81.6439	262	30.7707	-81.6505	337	30.76728	-81.6523
34	30.77373	-81.646166	110	30.76089	-81.6481	188	30.77174	-81.644	263	30.77062	-81.6504	338	30.76756	-81.6522
35	30.773687	-81.646383	111	30.76108	-81.6481	189	30.77149	-81.6442	264	30.77053	-81.6503	339	30.76778	-81.6522
36	30.773788	-81.646605	112	30.76114	-81.6483	190	30.77121	-81.6443	265	30.7704	-81.6502	340	30.76801	-81.652
37	30.773963	-81.646724	113	30.7613	-81.6485	191	30.77093	-81.6441	266	30.77026	-81.6502	341	30.76788	-81.652
38	30.774168	-81.646864	114	30.76138	-81.6486	192	30.7707	-81.6442	267	30.77016	-81.6502	342	30.76772	-81.6518
39	30.7744	-81.647071	115	30.76149	-81.6485	193	30.77051	-81.6442	268	30.77013	-81.6503	343	30.7676	-81.6517
40	30.774531	-81.647232	116	30.76141	-81.6483	194	30.77016	-81.6442	269	30.77011	-81.6504	344	30.76737	-81.6517
41	30.774769	-81.647354	117	30.76138	-81.648	195	30.77003	-81.6442	270	30.77011	-81.6505	345	30.7672	-81.6518
42	30.775054	-81.647239	118	30.7615	-81.6477	196	30.76999	-81.6442	271	30.77013	-81.6506	346	30.76701	-81.6519
43	30.775308	-81.647094	119	30.76171	-81.6476	197	30.76888	-81.6445	272	30.77009	-81.6507	347	30.76668	-81.652
44	30.775519	-81.646907	120	30.7619	-81.6473	198	30.7689	-81.6446	273	30.77015	-81.6508	348	30.76658	-81.6522
45	30.775616	-81.646719	121	30.76211	-81.6472	199	30.76894	-81.6449	274	30.77035	-81.6508	349	30.76639	-81.6523
46	30.775715	-81.646551	122	30.76228	-81.6474	200	30.76895	-81.6452	275	30.77044	-81.6506	350	30.76602	-81.6526
47	30.775841	-81.646451	123	30.7625	-81.6476	201	30.76917	-81.6454	276	30.77054	-81.6506	351	30.76587	-81.6526
48	30.77593	-81.646357	124	30.76268	-81.6479	202	30.76955	-81.6454	277	30.77051	-81.6507	352	30.76586	-81.6527
49	30.773682	-81.644586	125	30.76283	-81.6481	203	30.76974	-81.6454	278	30.77056	-81.6507	353	30.76576	-81.6528
50	30.773681	-81.644728	126	30.76306	-81.6483	204	30.76998	-81.6456	279	30.7707	-81.6507	354	30.76436	-81.6507
51	30.773732	-81.644944	127	30.76315	-81.6485	205	30.77022	-81.6456	280	30.77087	-81.6507	355	30.76432	-81.6507
52	30.773929	-81.645178	128	30.76308	-81.6488	206	30.77049	-81.6454	281	30.77096	-81.6508	356	30.76434	-81.6508
53	30.774202	-81.64515	129	30.7629	-81.6489	207	30.7707	-81.6454	282	30.77101	-81.6509	357	30.7645	-81.6509
54	30.774189	-81.644944	130	30.76291	-81.6492	208	30.77099	-81.6454	283	30.77109	-81.6509	358	30.76459	-81.6509
55	30.774096	-81.64469	131	30.76295	-81.6493	209	30.77119	-81.6455	284	30.77104	-81.6511	359	30.76462	-81.6507
56	30.77402	-81.644494	132	30.76306	-81.6493	210	30.77148	-81.6454	285	30.77102	-81.6512	360	30.76464	-81.6507
57	30.77385	-81.644421	133	30.76334	-81.6494	211	30.77175	-81.6455	286	30.77104	-81.6514	361	30.76456	-81.6507
58	30.772653	-81.646649	134	30.76349	-81.6493	212	30.7721	-81.6454	287	30.77111	-81.6516	362	30.76445	-81.6508
59	30.772468	-81.646458	135	30.76362	-81.6491	213	30.77226	-81.6453	288	30.77116	-81.6517	363	30.76438	-81.6508
60	30.772504	-81.646251	136	30.7636	-81.6488	214	30.77222	-81.6451	289	30.77117	-81.6519	364	30.76441	-81.6512
61	30.772298	-81.646145	137	30.7636	-81.6485	215	30.77222	-81.6448	290	30.76919	-81.6496	365	30.7642	-81.6512
62	30.772149	-81.646177	138	30.76362	-81.6482	216	30.77212	-81.6446	291	30.76896	-81.6496	366	30.76395	-81.6512
63	30.772098	-81.646386	139	30.76368	-81.6479	217	30.77219	-81.6445	292	30.76872	-81.6496	367	30.76383	-81.6512
64	30.771963	-81.646517	140	30.76385	-81.6477	218	30.77241	-81.6445	293	30.76856	-81.6498	368	30.76368	-81.6514
65	30.771941	-81.646754	141	30.76404	-81.6476	219	30.77259	-81.6446	294	30.76837	-81.6499	369	30.76363	-81.6516
66	30.77204	-81.646913	142	30.76427	-81.6475	220	30.77261	-81.6449	295	30.76842	-81.6501	370	30.76375	-81.6516
67	30.772132	-81.646981	143	30.76434	-81.6473	221	30.77265	-81.6451	296	30.76854	-81.6502	371	30.7639	-81.6518
68	30.772251	-81.647028	144	30.7643	-81.647	222	30.77277	-81.6451	297	30.76873	-81.6502	372	30.76403	-81.6518
69	30.772391	-81.647033	145	30.7642	-81.6466	223	30.77296	-81.6449	298	30.76885	-81.6503	373	30.7642	-81.6518
70	30.772577	-81.647015	146	30.76429	-81.6464	224	30.77299	-81.6446	299	30.76889	-81.6504	374	30.76438	-81.6517
71	30.772752	-81.64712	147	30.76433	-81.6462	225	30.77311	-81.6445	300	30.76904	-81.6505	375	30.76436	-81.6515
72	30.772932	-81.647194	148	30.7644	-81.6458	226	30.77325	-81.6442	301	30.76906	-81.6506	376	30.76443	-81.6514
73	30.773165	-81.64704	149	30.76453	-81.6456	227	30.773							