



DEPARTMENT OF THE ARMY  
U.S. ARMY CORPS OF ENGINEERS, SAVANNAH DISTRICT  
100 W. OGLETHORPE AVENUE  
SAVANNAH, GEORGIA 31401-3604

SAS-RD-C

3 January 2025

MEMORANDUM FOR RECORD

SUBJECT: US Army Corps of Engineers (Corps) Pre-2015 Regulatory Regime  
Approved Jurisdictional Determination in Light of *Sackett v. EPA*, 143 S. Ct. 1322  
(2023),<sup>1</sup> SAS-2024-00331(MFR 1 of 1)<sup>2</sup>

BACKGROUND. An Approved Jurisdictional Determination (AJD) is a Corps document stating the presence or absence of waters of the United States on a parcel or a written statement and map identifying the limits of waters of the United States on a parcel. AJDs are clearly designated appealable actions and will include a basis of JD with the document.<sup>3</sup> AJDs are case-specific and are typically made in response to a request. AJDs are valid for a period of five years unless new information warrants revision of the determination before the expiration date or a District Engineer has identified, after public notice and comment, that specific geographic areas with rapidly changing environmental conditions merit re-verification on a more frequent basis.<sup>4</sup> For the purposes of this AJD, we have relied on section 10 of the Rivers and Harbors Act of 1899 (RHA),<sup>5</sup> the Clean Water Act (CWA) implementing regulations published by the Department of the Army in 1986 and amended in 1993 (references 2.a. and 2.b. respectively), the 2008 *Rapanos-Carabell* guidance (reference 2.c.), and other applicable guidance, relevant case law and longstanding practice, (collectively the pre-2015 regulatory regime), and the *Sackett* decision (reference 2.d.) in evaluating jurisdiction.

This Memorandum for Record (MFR) constitutes the basis of jurisdiction for a Corps AJD as defined in 33 CFR §331.2. The features addressed in this AJD were evaluated consistent with the definition of “waters of the United States” found in the pre-2015 regulatory regime and consistent with the Supreme Court’s decision in *Sackett*. This AJD did not rely on the 2023 “Revised Definition of ‘Waters of the United States,’” as

---

<sup>1</sup> While the Supreme Court’s decision in *Sackett* had no effect on some categories of waters covered under the CWA, and no effect on any waters covered under RHA, all categories are included in this Memorandum for Record for efficiency.

<sup>2</sup> When documenting aquatic resources within the review area that are jurisdictional under the Clean Water Act (CWA), use an additional MFR and group the aquatic resources on each MFR based on the TNW, interstate water, or territorial seas that they are connected to. Be sure to provide an identifier to indicate when there are multiple MFRs associated with a single AJD request (i.e., number them 1, 2, 3, etc.).

<sup>3</sup> 33 CFR 331.2.

<sup>4</sup> Regulatory Guidance Letter 05-02.

<sup>5</sup> USACE has authority under both Section 9 and Section 10 of the Rivers and Harbors Act of 1899 but for convenience, in this MFR, jurisdiction under RHA will be referred to as Section 10.

SAS-RD-C

SUBJECT: Pre-2015 Regulatory Regime Approved Jurisdictional Determination in Light of *Sackett v. EPA*, 143 S. Ct. 1322 (2023), SAS-2024-00331

amended on 8 September 2023 (Amended 2023 Rule) because, as of the date of this decision, the Amended 2023 Rule is not applicable in this state due to litigation.

## 1. SUMMARY OF CONCLUSIONS.

- a. Provide a list of each individual feature within the review area and the jurisdictional status of each one (i.e., identify whether each feature is/is not a water of the United States and/or a navigable water of the United States).

Name of Aquatic Resource	JD or Non-JD	Section 404/Section 10
Aquatic Resource Area A	Non-JD	N/A

## 2. REFERENCES.

- a. Final Rule for Regulatory Programs of the Corps of Engineers, 51 FR 41206 (November 13, 1986).
- b. Clean Water Act Regulatory Programs, 58 FR 45008 (August 25, 1993).
- c. U.S. EPA & U.S. Army Corps of Engineers, Clean Water Act Jurisdiction Following the U.S. Supreme Court's Decision in *Rapanos v. United States & Carabell v. United States* (December 2, 2008)
- d. *Sackett v. EPA*, 598 U.S. 651 (2023)

## 3. REVIEW AREA.

- a. Project Area Size (in acres): 14.0
- b. Center Coordinates of the Project Site (in decimal degrees)  
Latitude: 32.387897 Longitude: -82.076853
- c. Nearest City or Town: Metter
- d. County: Chandler County
- e. State: Georgia
- f. Other associated Jurisdictional Determinations (including outcomes): N/A

## 4. NEAREST TRADITIONAL NAVIGABLE WATER (TNW), INTERSTATE WATER, OR THE TERRITORIAL SEAS TO WHICH THE AQUATIC RESOURCE IS CONNECTED. N/A. All aquatic resources in the review area are non-jurisdictional.

## 5. FLOWPATH FROM THE SUBJECT AQUATIC RESOURCES TO A TNW, INTERSTATE WATER, OR THE TERRITORIAL SEAS. N/A. All aquatic resources in the review area are non-jurisdictional.

6. SECTION 10 JURISDICTIONAL WATERS<sup>6</sup>: Describe aquatic resources or other features within the review area determined to be jurisdictional in accordance with Section 10 of the Rivers and Harbors Act of 1899. Include the size of each aquatic resource or other feature within the review area and how it was determined to be jurisdictional in accordance with Section 10.<sup>7</sup> N/A
7. SECTION 404 JURISDICTIONAL WATERS: Describe the aquatic resources within the review area that were found to meet the definition of waters of the United States in accordance with the pre-2015 regulatory regime and consistent with the Supreme Court's decision in *Sackett*. List each aquatic resource separately, by name, consistent with the naming convention used in section 1, above. Include a rationale for each aquatic resource, supporting that the aquatic resource meets the relevant category of "waters of the United States" in the pre-2015 regulatory regime. The rationale should also include a written description of, or reference to a map in the administrative record that shows, the lateral limits of jurisdiction for each aquatic resource, including how that limit was determined, and incorporate relevant references used. Include the size of each aquatic resource in acres or linear feet and attach and reference related figures as needed.
  - a. TNWs (a)(1): N/A
  - b. Interstate Waters (a)(2): N/A
  - c. Other Waters (a)(3): N/A
  - d. Impoundments (a)(4): N/A
  - e. Tributaries (a)(5): N/A
  - f. The territorial seas (a)(6): N/A
  - g. Adjacent wetlands (a)(7): N/A

---

<sup>6</sup> 33 CFR 329.9(a) A waterbody which was navigable in its natural or improved state, or which was susceptible of reasonable improvement (as discussed in § 329.8(b) of this part) retains its character as "navigable in law" even though it is not presently used for commerce, or is presently incapable of such use because of changed conditions or the presence of obstructions.

<sup>7</sup> This MFR is not to be used to make a report of findings to support a determination that the water is a navigable water of the United States. The district must follow the procedures outlined in 33 CFR part 329.14 to make a determination that water is a navigable water of the United States subject to Section 10 of the RHA.

## 8. NON-JURISDICTIONAL AQUATIC RESOURCES AND FEATURES

- a. Describe aquatic resources and other features within the review area identified as “generally non-jurisdictional” in the preamble to the 1986 regulations (referred to as “preamble waters”).<sup>8</sup> Include size of the aquatic resource or feature within the review area and describe how it was determined to be non-jurisdictional under the CWA as a preamble water. N/A
- b. Describe aquatic resources and features within the review area identified as “generally not jurisdictional” in the *Rapanos* guidance. Include size of the aquatic resource or feature within the review area and describe how it was determined to be non-jurisdictional under the CWA based on the criteria listed in the guidance. N/A
- c. Describe aquatic resources and features identified within the review area as waste treatment systems, including treatment ponds or lagoons designed to meet the requirements of CWA. Include the size of the waste treatment system within the review area and describe how it was determined to be a waste treatment system. N/A
- d. Describe aquatic resources and features within the review area determined to be prior converted cropland in accordance with the 1993 regulations (reference 2.b.). Include the size of the aquatic resource or feature within the review area and describe how it was determined to be prior converted cropland. N/A
- e. Describe aquatic resources (i.e. lakes and ponds) within the review area, which do not have a nexus to interstate or foreign commerce, and prior to the January 2001 Supreme Court decision in “*SWANCC*,” would have been jurisdictional based solely on the “Migratory Bird Rule.” Include the size of the aquatic resource or feature, and how it was determined to be an “isolated water” in accordance with *SWANCC*. N/A
- f. Describe aquatic resources and features within the review area that were determined to be non-jurisdictional because they do not meet one or more categories of waters of the United States under the pre-2015 regulatory regime consistent with the Supreme Court’s decision in *Sackett* (e.g., tributaries that are non-relatively permanent waters; non-tidal wetlands that do not have a continuous surface connection to a jurisdictional water).

---

<sup>8</sup> 51 FR 41217, November 13, 1986.

SAS-RD-C

SUBJECT: Pre-2015 Regulatory Regime Approved Jurisdictional Determination in Light of *Sackett v. EPA*, 143 S. Ct. 1322 (2023), SAS-2024-00331

Name of excluded feature	Size (in acres)	Type of resource generally not jurisdictional
Aquatic Resource Area A	1.5	The wetland abuts an approximate 35-ft culvert to the north which goes under West Hiawatha Street. Besides the culvert, the wetland is surrounded by uplands on all sides. According to the agent and LIDAR, the culvert is at a lower elevation in the wetland than north of West Hiawatha Street. This indicates that water flows into the wetland from the north. There is a ditch north of West Hiawatha Street that the culvert abuts to. The ditch continues for approximately 325 ft to the northwest towards nearby wetlands. However, according to NWI and LIDAR the ditch terminates in the upland prior to reaching a wetland. As a result, Aquatic Resource Area A lacks a continuous surface connection to a Water of the U.S. and is a non-jurisdictional feature.

9. DATA SOURCES. List sources of data/information used in making determination. Include titles and dates of sources used and ensure that information referenced is available in the administrative record.

- a. Date of Desktop Review: January 2, 2025
- b. Data sources used to support this determination (included in the administrative record).
  - ☒ Aquatic Resources delineation submitted by, or on behalf of, the requestor: Titled "Aquatic Resource Map" and dated February 16, 2024.
  - ☒ Aerial Imagery: Source: Google Earth
  - ☒ LIDAR: Source: NOAA, titled "NOAA LIDAR", and dated January 2, 2025.
  - ☒ USDA NRCS Soil Survey: Titled "Custom Soil Resource Report" and dated January 2, 2025.
  - ☒ USFWS NWI maps: Titled "NWI" and dated January 2, 2025.
  - ☒ USGS NHD data/maps: Titled "NHD" and dated January 2, 2025.
  - ☒ Antecedent Precipitation Tool Analysis: Dated March 21, 2024.

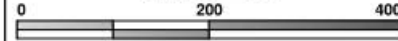
10. OTHER SUPPORTING INFORMATION. N/A

11. NOTE: The structure and format of this MFR were developed in coordination with the EPA and Department of the Army. The MFR's structure and format may be subject to future modification or may be rescinded as needed to implement additional guidance from the agencies; however, the approved jurisdictional determination described herein is a final agency action.

**WETLANDS NOTE:**

ALL TIDAL AND NON-TIDAL TRIBUTARIES, MARSH AREAS AND WETLANDS ARE UNDER THE JURISDICTION OF THE CORPS OF ENGINEERS AND/OR THE STATE OF GEORGIA DEPARTMENT OF NATURAL RESOURCES. OWNERS ARE SUBJECT TO PENALTY BY LAW FOR DISTURBANCE OF THESE PROTECTED AREAS WITHOUT PROPER PERMIT APPLICATION AND APPROVAL FROM THOSE AGENCIES." WETLANDS WERE DELINEATED BY RESOURCE + LAND CONSULTANTS ON 01/15/2024

SCALE: 1" = 200'

**GENERAL NOTES:**

- HORIZONTAL DATUM IS BASED ON NAD 1983 GA. EAST ZONE ESTABLISHED BY USING EGPS SOLUTIONS NETWORK GPS. DISTANCES SHOWN ARE GRID DISTANCES IN U.S. SURVEY FEET.
- A ROBOTIC TOTAL STATION WAS USED TO LOCATE A PORTION OF THE WETLAND FLAGS. ANOTHER PORTION OF THE WETLAND FLAG LOCATION WAS COMPLETED USING A GPS BASE AND ROVER RTK SYSTEM.
- A TRIMBLE R12i MULTI-FREQUENCY GPS RECEIVER WAS UTILIZED FOR REAL TIME KINEMATIC (RTK) POSITIONS ADJUSTED BY THE EGPS NETWORK, THIS RECEIVER HAS A MAXIMUM HORIZONTAL ACCURACY OF 8MM + 1 PPM RMS AND A MAXIMUM VERTICAL ACCURACY OF 15MM + 1 PPM RMS AS PER THE MANUFACTURER.
- OWNERS AND TAX ID. NUMBERS WERE TAKEN FROM THE BULLOCH COUNTY TAX ASSESSORS WEB SITE.

**LEGEND:**

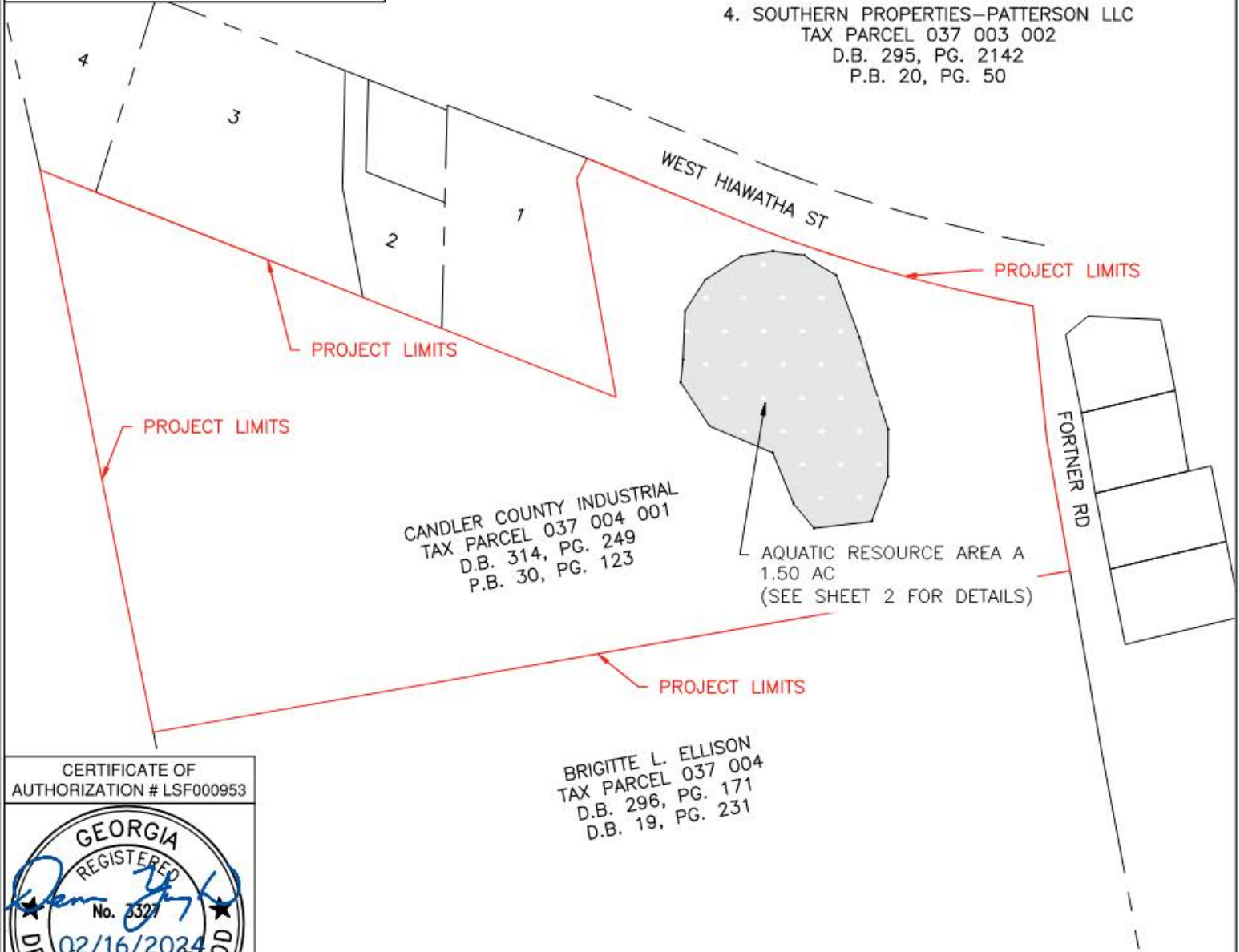
- = PROPERTY LINE
- = EDGE OF ROAD
- = PROJECT LIMITS LINE

1. RICKY & JODY CONNER TAX  
PARCEL 037 003 001  
D.B. 162, PG. 15  
P.B. 08, PG. 69

2. BRIER CREEK PROPERTIES LLC  
TAX PARCEL 037 003 003  
D.B. 298, PG. 463  
P.B. 27, PG. 15

3. BRIER CREEK PROPERTIES LLC  
TAX PARCEL 037 003  
D.B. 295, PG. 5191  
P.B. 1, PG. 561

4. SOUTHERN PROPERTIES-PATTERSON LLC  
TAX PARCEL 037 003 002  
D.B. 295, PG. 2142  
P.B. 20, PG. 50



CERTIFICATE OF  
AUTHORIZATION # LSF000953



BRIGITTE L. ELLISON  
TAX PARCEL 037 004  
D.B. 296, PG. 171  
D.B. 19, PG. 231

**PROJECT AREAS**

TOTAL PROJECT LIMITS AREA = ±14.36 ACRES  
TOTAL UPLANDS AREA = ±12.86 ACRES  
TOTAL AQUATIC RESOURCE AREA = 1.50 ACRES



MAXWELL-REDDICK AND ASSOCIATES  
ENGINEERING • LAND SURVEYING

40 JOE KENNEDY BLVD  
STATESBORO, GA 30458  
(912) 489-7112 OFFICE

2500 NORTHWINDS PKWY  
SUITE 360  
ALPHARETTA, GA 30009  
(404) 693-1618 OFFICE

DRAWN BY: BB

DATE: 02-16-2024

JOB NO.: 2023-230

SCALE: AS SHOWN

**AQUATIC RESOURCE MAP  
FOR  
JOEY BURKE**

LOCATED IN THE 1684TH G.M.D., CANDLER COUNTY, GA

DRAWING NUMBER

**1**

1 OF 3 SHEETS