

US Army Corps
of Engineers

Rapanos vs. SWANCC

Adjacent
or
Isolated



US Army Corps
of Engineers

Rapanos vs. SWANCC

What do Rapanos and
SWANCC mean to the
regulatory biologist

????????



US Army Corps
of Engineers

Rapanos vs. SWANCC

! @ % * # ?



US Army Corps
of Engineers

Adjacent?

Definition 33 CFR 328.3(c)

The term “adjacent” means bordering, contiguous, or neighboring. Wetlands separated from other waters of the United States by man-made dikes or barriers, natural river berms, beach dunes and the like are “adjacent wetlands.”



US Army Corps
of Engineers

Adjacent?

Limits of Jurisdiction 33 CFR 328.4(c)

- 1) In the absence of adjacent wetlands, jurisdiction extends to the OHWM
- 2) When adjacent wetlands are present, jurisdiction extends beyond the OHWM to the limit of adjacent wetlands
- 3) When WOUS consist only of wetlands, jurisdiction extends to the limit of the wetland



US Army Corps
of Engineers

Adjacent?

Rapanos Adjacency Guidance

Decisions regarding adjacency should be made using the best available information, such as aerial photographs, soil surveys, topographic maps and direct observations, and documented on the Approved Jurisdictional Determination Form



US Army Corps
of Engineers

Adjacent?

Savannah Adjacency Factors

- Within 100-year floodplain or any active floodplain
- Proximity to TNW or RPW (no specific distance)
- Geomorphometry (landscape position to TNW or RPW)
- Surface hydrologic connections
- Size of wetland (flood storage capacity)



US Army Corps
of Engineers

Adjacent?

Recent Headquarters Determination

- EPA elevated Savannah determination for 70 acres of isolated wetlands on a barrier island
- Headquarters determined wetlands to be adjacent based on proximity to TNW, surface and subsurface hydrologic connectivity and physical characteristics
- Savannah District will use guidance on case-by-case basis to assist with future barrier island sites



US Army Corps
of Engineers

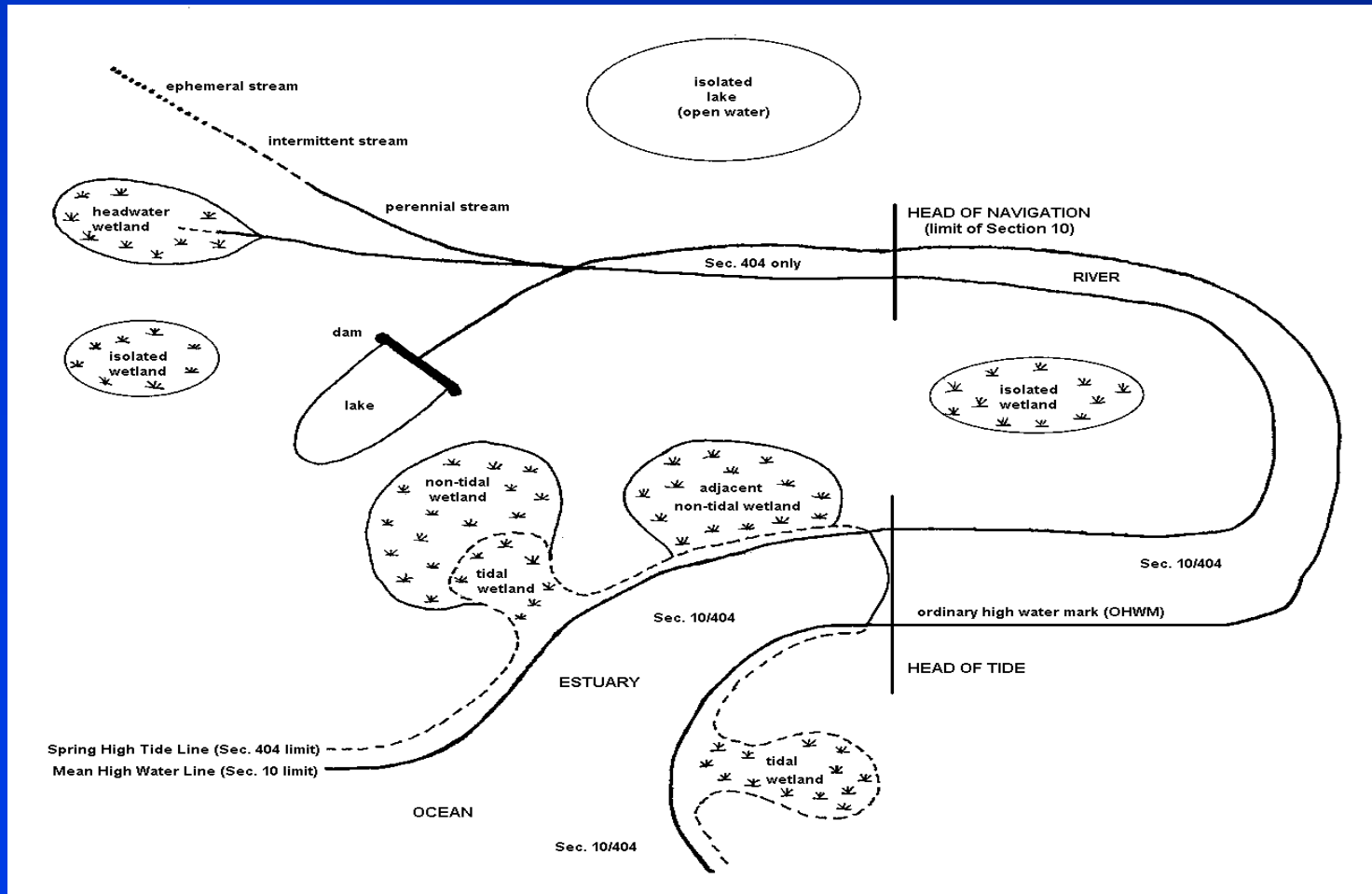
Rapanos vs. SWANCC

- Rapanos did not change SWANCC
- Savannah District continues to make isolated wetland determinations consistent with its pre-Rapanos SWANCC policy
- However, some 2001-2002 Savannah District isolated wetland determinations may be in error and will change when re-verification is requested



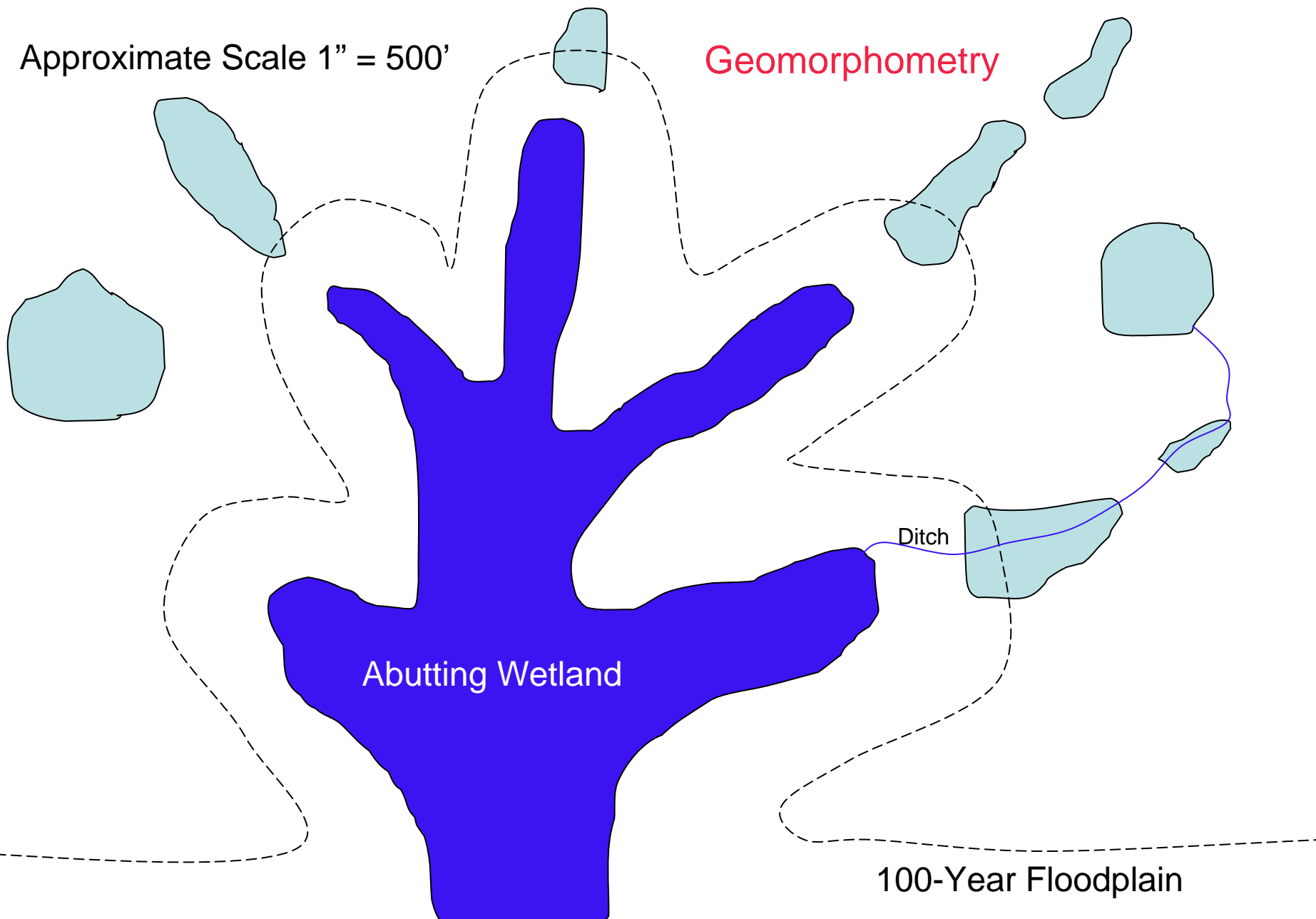
US Army Corps
of Engineers

Pre-Rapanos Headquarters Guidance



Approximate Scale 1" = 500'

Geomorphometry



Abutting Wetland

Ditch



100-Year Floodplain

RPW

Approximate Scale 1" = 500'

Geomorphometry

Isolated
Five Acres

-  Jurisdictional
-  Non-jurisdictional

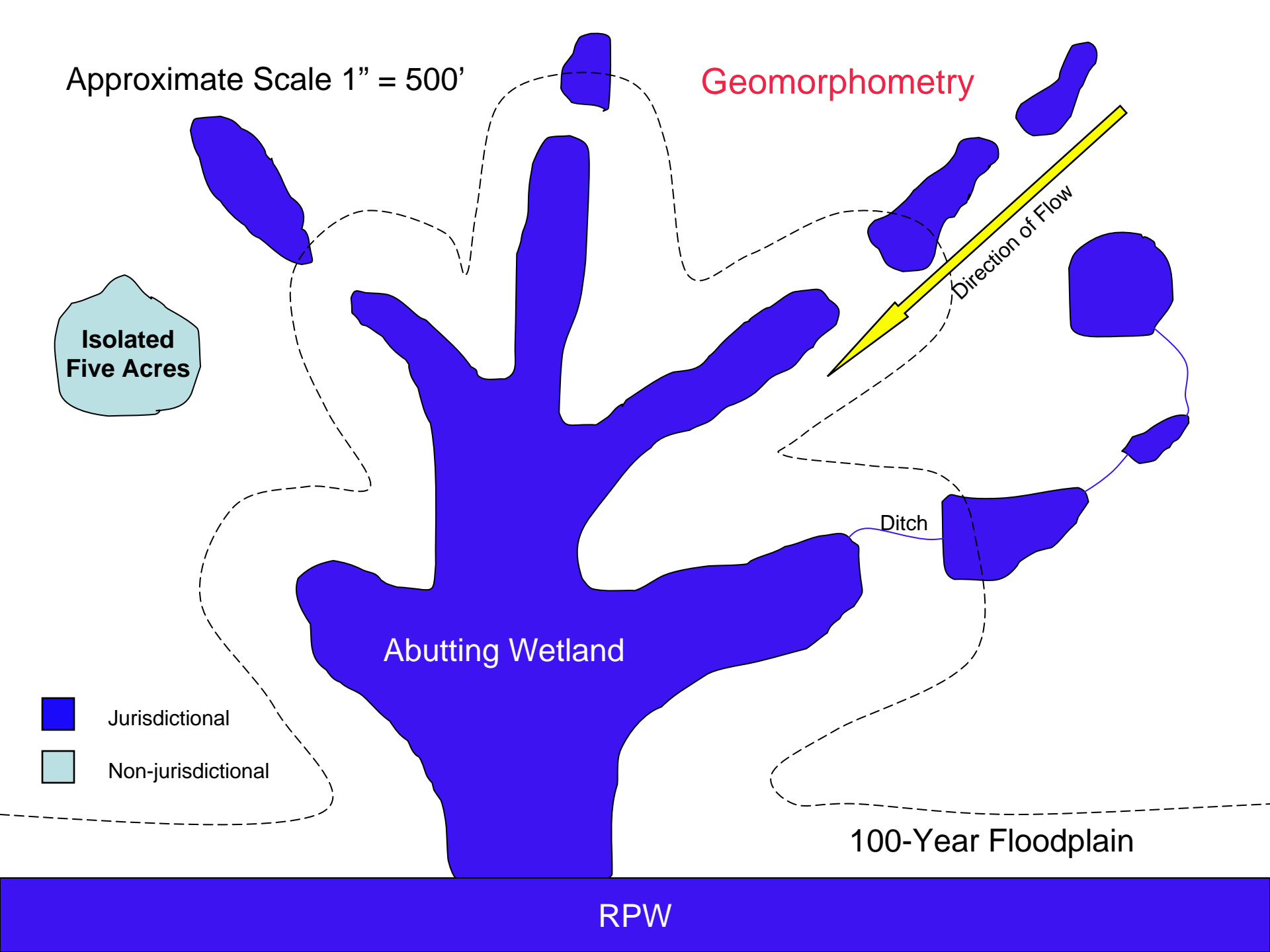
Abutting Wetland

Ditch

Direction of Flow

100-Year Floodplain

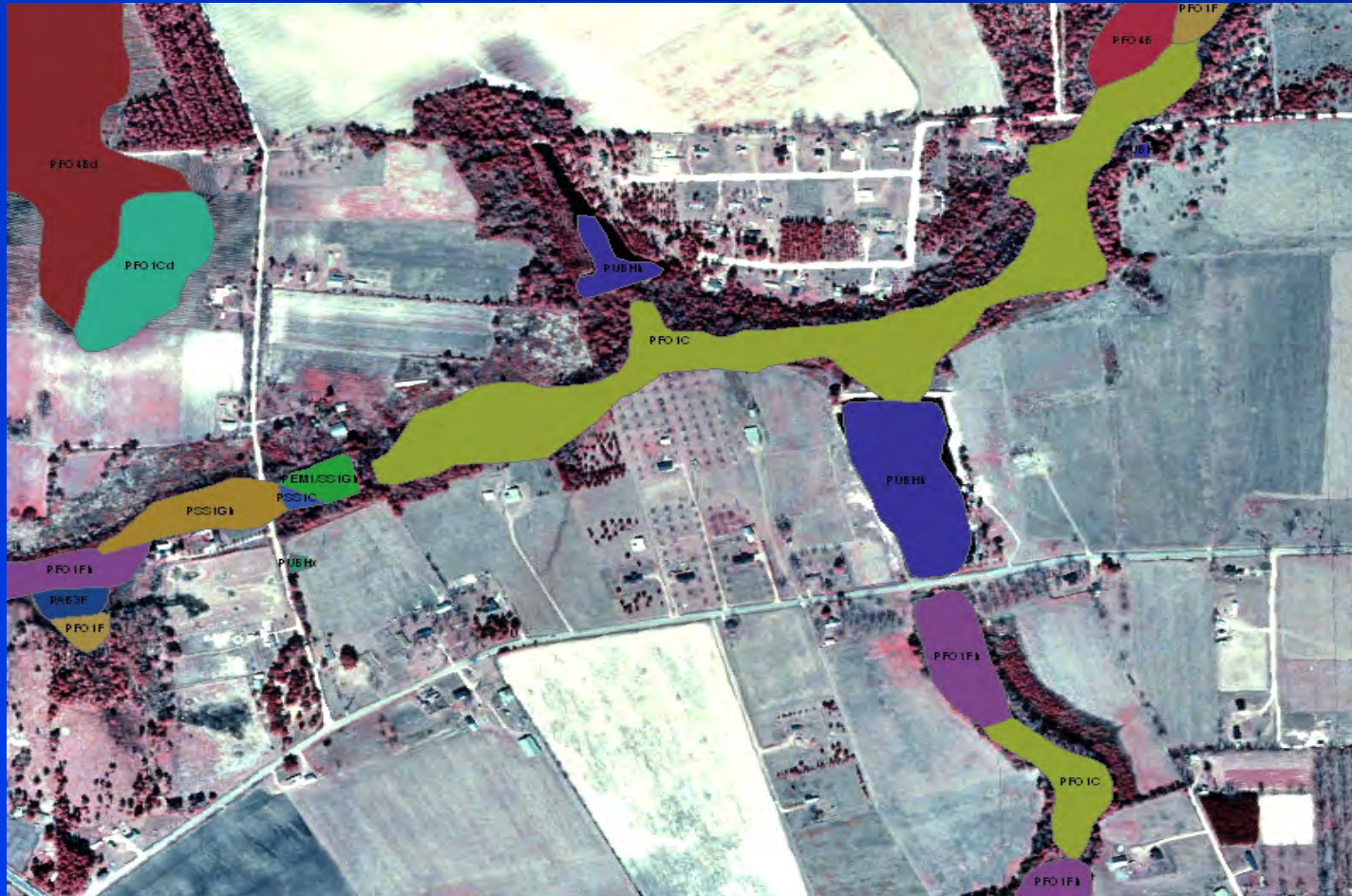
RPW





US Army Corps
of Engineers

Geomorphometry



Savannah District, Regulatory Division



US Army Corps
of Engineers

Continuous Surface Connection



Non-jurisdictional
Grass-lined Swale



US Army Corps
of Engineers

Continuous Surface Connection





US Army Corps
of Engineers

Isolated Wetland Example





US Army Corps
of Engineers

Isolated Wetland Example





US Army Corps
of Engineers

Adjacency Summary

- Abutting TNW or RPW
- Proximity to TNW or RPW
- Jurisdictional ditch connection
- Continuous surface connection
- Within 100-year Floodplain
- Geomorphometry (landscape position)



US Army Corps
of Engineers

Isolated Summary

- If it's not abutting a TNW or RPW – it might be isolated
- If it's a thousand feet or more from the nearest TNW or RPW – it might be isolated
- If there's no ditch or continuous surface connection to a TNW or RPW – it might be isolated
- If it's not within the 100-year floodplain – it might be isolated
- If there's no obvious down-slope direction of flow to other nearby wetlands (geomorphometry) – it might be isolated